

**D.J.  
POPHAM  
& SONS Ltd.**

99 - 100 CLASE ROAD MORRISTON  
SWANSEA SA6 8DY  
CONTRACTING AND CONSULTING  
HEATING AND VENTILATING ENGINEERS

Shell Marketing Ltd., & BP Marketing Ltd.,  
Appointed Installer  
C.O.R.G.I. registered  
N.C.B., R.H.C.  
Wales Gas Board Approved  
Member Federation Master Builders

**ASTLEY SAMUEL LEEDER & SON**

CHARTERED SURVEYORS: CHARTERED AUCTIONEERS

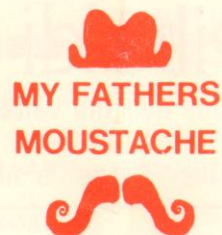
Undertake the following work for Clients:

Sales and Valuations of Houses, Shops, Factories, Farms, Investment Properties and  
Licensed Premises.  
Sales and Valuations of Furniture, Works of Art, and Household effects  
Plant and Machinery Sales and Valuations  
Rating Valuations of all classes of Property  
Town and Country Planning Appeals  
Estate Development and Management of Town and Country Properties

Telegrams 49 MANSEL STREET SWANSEA Telephone:  
LEADING, SWANSEA 24 HOUR TELEPHONE ANSWERING SERVICE SWANSEA 55891

L. Wynne Davies, F.R.I.C.S.  
J. Myrddin Lewis, F.R.I.C.S.  
Douglas S. Williams, A.R.I.C.S.  
Jeremy D. Smith, A.R.I.C.S.

**SWANSEA'S  
TOP  
MENSWEAR**



4 BELLE VUE WAY,  
SWANSEA SA1 5BY  
Tel.: 0792 52727

36 THE ARCADE  
STEPNEY STREET,  
LLANELLI, SA15 eYB  
Tel.: Llanelli 58895

**Swansea Auto Engine Services Ltd.**

MEADOW STREET TOWNHILL SWANSEA  
Telephone: Swansea 582122 & 582614

Engine Remanufacturing, Crankshaft Grinding, Cylinder Boring  
and all Engine Repair Work

Member of the Federation of Engine Remanufacturers



**SWANSEA  
CITY  
FOOTBALL  
CLUB**

*Welcome to  
Swansea City*

Official  
**12p**

Programme



**SEASON 1976-77**

SATURDAY, 2nd APRIL, 1977

**NEWPORT COUNTY**

Kick - off 3.00 p.m.

**Football League - Division Four**





6 MANSEL STREET . SWANSEA  
TEL.: 50100 - 52077 - 41291

Luxury Coach Proprietors  
Haulage Contractors  
Low Loader Specialists  
Plant Hire & Civil Engineering  
Suppliers of Ash & Hard Core

## The City Tavern

El Vino Restaurant  
Northampton Lane, Swansea  
Telephone 51770 (Rest) 51742  
"THE INN PLACE"

for our famous hot and cold luncheon Bar Snacks and our well stocked Wine Bar by the bottle or the glass

"THE INN PLACE"

for our Gourmet Menu and Lunch Table d'Hôte

LAST ORDERS IN THE RESTAURANT 11.30

"THE INN PLACE"

Don't forget Saturday lunchtime when we serve the real different buffet . . . to name but a few Caribbean prawns, smoked salmon and escargots, etc.

## You can't win them all . . .

but if you want to celebrate (or commiserate), drop in at the Dragon. There's the Restaurant, offering an excellent menu, or the Dragon and Viking Restaurant, serving light refreshments and grills at lunchtime and in the evening. And there are four bars to choose from!

### Dragon Hotel

39 The Kingsway, Swansea

Tel.: Swansea 51074

## QUADRANT

SPECIALISTS IN— ★ Engine Tuning

### MOTOR

★ Auto Electrics

### SERVICES

★ Full Car Servicing

SWANSEA LTD.

★ Any Make of Car

TEL. 43849

★ Satisfaction Guaranteed

28 CLARENCE TERRACE . SWANSEA

## S. V. B. Contractors

SWANSEA LTD

CASWELL HOUSE 53 WALTER ROAD  
SWANSEA



### Swansea City

#### A.F.C. Ltd.

Vetch Field,  
Swansea  
Phone 42855

President :  
P. E. HOLDEN

Chairman :  
MALCOLM STRUEL

Vice-Chairman :  
TOM PHILLIPS, F.I.O.B.

Directors :  
PHILIP OWEN,  
T.D., Q.C., M.A. (Oxon)  
IVOR PURSEY, M.B.E.  
PETER WALTERS  
ROBERT JONES  
WILLIAM FLOYD

Secretary :  
GORDON DANIELS

Manager :  
HARRY GRIFFITHS

Commercial Manager :  
GEOFF FORD

Hon. Medical Officer :  
Dr. BERNARD DAVIES



## MANAGER'S NOTES

After nine points from five matches, our defeat at Brentford last Saturday was a major disappointment. Not only in the fact that we went down by four goals . . . but because it was the first game this season in which we have failed to create a genuine scoring chance.

That was the most worrying point of all - and one that I want to see put right this afternoon. So far this season we have knocked Newport County out of the Football League and Welsh Cups and scored our first away win at Somerton Park, but, in terms of importance, this game tops the lot.

It is a 'derby' that we first have to win, then play the football that will give us the confidence to tackle the heavy programme from now until the end of the season with genuine hopes of promotion. Winning today is all important - so is the manner of it.

As far as the public is concerned, certainly those who read the press reports of our matches, there has been more publicity about Steve Potter. Goalkeepers, of course, are an unlucky breed: if they make a mistake the ball is in the net and everyone knows about it. An equally bad slip in mid-field, or even in defence, can escape unpunished.

Steve made some tremendous saves at Brentford. He was bundled into the net for Brentford's second goal - the 'killer' score against us - and I firmly believe that the home side should have been penalised. It was not Steve's mistake; nor was the fourth goal when the wall failed to form properly in front of him to counter a free kick just outside our penalty area.

In the home game against Stockport when we went four goals down before fighting back, Steve could not be faulted for an own goal and two terrible back passes.

I am not excusing some of the mistakes which undeniably, he has made: but I think it only fair to strike a 'balance sheet'. Steve has many of the assets that go to making a very fine goalkeeper but, in the final analysis, so much is up to him. I know that in these remaining vital weeks, he is intent on repaying the faith we have shown in him this season

## R.A. Preston

(ENGINEERING) LTD.

Designers and Manufacturers of  
Component Handling Systems and  
Component Washing Machines

HEOL LANGDON,  
PRINCE OF WALES DOCK  
SWANSEA  
Tel.: 51445-6

## R.A. Preston

(ELECTRICALS) Ltd.

Electrical Control  
Panel Manufacturers  
LANGDON ROAD,

PRINCE OF WALES DOCK,  
SWANSEA  
Tel.: 52826





## Sea Beach Hotel

HORTON

Telephone GOWER 252

WEDDING RECEPTIONS

PRIVATE DINNER DANCES

LUNCHES - RESTAURANT

## ANTALREST LTD.

30, OXFORD STREET,  
SWANSEA

Telephone: SWANSEA 51687

For

DOORS, WALLBOARDS and

ALL D.I.Y. REQUIREMENTS



**Motors (Swansea) Limited**

Neath Road, Morriston Swansea

Telephone 75101/8



Main Dealers

for

Vauxhall - Bedford - Opel

Swansea's Progressive Main Dealer

MARGO and JOHN HOWARD

*Invite you to visit*

## The Old School House Hotel

NEWTON, MUMBLES Tel.: SWANSEA 61201

FINEST ENGLISH & FRENCH CUISINE

All bedrooms equipped with private bathrooms

## North Gower Hotel

LLANRHIDIAN, GOWER

'Phone REYNOLDSTON 242

Wedding Receptions & Parties

Bar Lunches Daily and

Sunday Lunches

LATE SUPPER LICENCE - CAR PARK

SWANSEA CITY A.F.C.  
need your help in

## FUND RAISING

Why not pop in to the Commercial  
Office, 33 William Street and ask  
GEOFF FORD for full particulars

REMEMBER - WE NEED YOU

## MAN IN THE MIDDLE

DARRYL V. REEVES

MIDDLESEX

Commenced refereeing in 1961 and progressed via local leagues through the Spartan and Isthmian Leagues to the Football League list. Refereed the 1973 Oxford v. Cambridge university match at Wembley. A married man, with two children, he is a Manager whose home interests are interior decorating and gardening.

### LEAGUE—DIVISION IV

	P	W	D	L	F	A	W	D	L	F	A	pts.
Cambridge	34	11	5	1	36	11	7	7	3	20	14	48
Colchester	35	15	0	2	42	10	5	4	9	19	22	44
Bradford	35	11	6	0	37	16	6	4	8	23	28	44
Barnsley	36	12	5	1	33	13	5	3	10	13	18	42
Southend	34	9	7	2	29	12	4	8	4	15	14	41
Doncaster	34	12	2	4	34	19	4	7	5	18	22	41
Exeter	34	12	4	1	30	11	3	7	7	18	29	41
Huddersfield	34	13	3	1	31	11	3	5	9	16	25	40
Swansea	34	12	3	1	44	21	4	3	11	20	32	38
Watford	34	11	5	0	33	9	2	7	9	14	28	38
Bournemouth	35	10	7	1	31	10	2	7	8	13	24	38
Crewe	35	12	4	0	28	10	3	4	12	10	38	38
Stockport	35	9	6	3	24	15	3	6	8	17	26	36
Darlington	34	10	4	3	26	18	3	6	8	17	33	36
Aldershot	34	8	5	4	22	13	5	3	9	16	28	34
Rochdale	35	7	5	5	25	16	4	5	9	14	23	32
Scunthorpe	35	10	4	4	29	15	2	3	12	12	34	31
Halifax	35	10	3	5	33	15	0	7	10	8	27	30
Torquay	34	8	4	5	22	16	3	2	12	19	40	28
Hartlepool	36	8	8	2	28	12	0	3	15	12	45	27
Brentford	35	10	2	6	39	24	1	2	14	18	41	26
Southport	35	2	10	6	12	21	0	5	12	12	37	19
Newport	32	4	6	5	16	15	1	3	13	6	32	19
Wokington	34	3	6	9	17	30	1	3	12	13	41	17

### TODAYS MATCH BALL DONORS

We most gratefully thank

**W. WALTERS & SONS LTD.**

and

**W. R. JONES, STEEL SUPPLY Co.**



### FACE IN THE CROWD

Please claim Two Grand Stand Tickets for next Home Match from  
Secretary's Office.



# DON PEPE

Ladies Hair Stylists  
KING EDWARD ROAD -  
SWANSEA  
Tel.: 55151

## Our pack will take some beating.

Apex packaging is tough and durable. Not to mention thick-skinned, thanks to our revolutionary Tri-Wall packaging material. We're also on the move with our new Tri-Trolley, an industrial trolley stronger than steel mesh or fibreglass yet lighter and cheaper than both.



Last but not least—we're versatile, dealing in all shapes, sizes and qualities of corrugated cases. Come to Apex for all your packaging requirements.

Apex Packaging Limited  
Nantyffin North, Llansamlet  
Swansea Tel: 75331/2/3

Best Wishes  
for the Future  
from

## STRAND Transport

ARCH 15 STRAND  
SWANSEA

## GRAHAM HARCOURT

(PRINTERS) LIMITED  
52, PRINCE OF WALES ROAD  
SWANSEA  
Telephone: 54471

- SWANSEA CITY
1. Steve POTTER
  2. Wyn EVANS
  3. Danny BARTLEY
  4. George SMITH
  5. Eddie MAY
  6. Dave BRUTON
  7. Les CHAPPELL
  8. Robbie JAMES
  9. Alan CURTIS
  10. Jeremy CHARLES
  11. Pat LALLY
  12. To be announced

Referee:  
Mr. D. V. REEVES

FULL  
REPORTS  
EVENING  
POST

Linesmen:  
Mr. H. E. BISHOP  
Tonypandy  
(Orange Flag)  
Mr. K. COOPER  
Pontypridd  
(Red Flag)

- NEWPORT COUNTY
1. G. PLUMLEY
  2. S. DERRETT
  3. G. BELL
  4. R. WALKER
  5. R. JONES
  6. C. BYRNE
  7. T. VILLARS
  8. J. EMANUEL
  9. B. CLARK
  10. D. WOODS
  11. A. WHITE
  12. To be announced

## GRAHAM HARCOURT

(PRINTERS) LIMITED  
WEDDING STATIONERY  
A SPECIALITY

Wedding and  
Portrait Photography

Roger David  
Studios

61 Newton Road, Mumbles,  
Swansea Telephone 69698



Experienced  
underground men  
and fit men for  
training required at  
**ABERNANT &  
CYNHEIDRE  
COLLIERIES**

Apply to the Colliery Managers

NCB

MIN & TOM invite you to visit the  
for your Hot Snacks, Teas and Coffee  
Situated 200 yards from the Ground

## SINGLETON CAFE

## Jack Sullivan Ltd.

WHOLESALE  
BEER, WINE AND SPIRIT MERCHANT

MILLBROOK ESTATE  
LANDORE SWANSEA

Tel.: Swansea 76398  
For prompt Service

## LOGO MENS BOUQUET

PICTON ARCADE  
SWANSEA  
Tel.: Swansea 43279



**MICHAEL BOON**  
Sunday Express Sports Columnist in Wales

## BACK TO THE GRIM DAYS

It is starting to look as if last season was a rare vintage. Consider the position this time last year: Cardiff City thrusting for promotion and scoring goals all over the place; Wales in the quarter-finals of the European Championships; Wales Youth qualifying for the finals of the 'Little World Cup'; the acute financial depression of Newport County yet to hit us; Hereford United on the brink of introducing Mid Wales to Second Division football. . . . it all looked marvellous.

The current state of play is in rather sharp contrast (although these notes had to be written before the World Cup game against Czechoslovakia last Wednesday night). Nothing is of greater concern at the moment than the latest crisis at Cardiff City.

Welsh football needs a Second Division club. Not only does it bring that prized full membership of the football League but it prevents Wales being tucked away in a corner and ignored. Once again, there is the uncomfortable feeling that the crisis is upon us.

Struggles against relegation have only a limited, morbid interest. While a large slice of the population will now be hanging on every Cardiff result for the remaining weeks of the season, it will be for the wrong reasons. That is why I hope that Swansea City will not allow themselves the indignity of any more 0-4 defeats or coming back from four goals down at home.

I have maintained for a long time that this Swans side is good enough to take the Fourth Division by storm. It needs to believe in itself a little more, cut out the generous defensive gaps which have enabled eight goals to be smashed into the net and not take chances. Then it can still happen.

The factual truth about the Swans position now is that they cannot afford anything less than 100% at home, and there has to be a reasonable haul on trips away from the Vetch Field.

I find no consolation in the case occasionally presented that another year of preparation will do no harm. It will. Great harm. Robbie James and Jeremy Charles may not yet be in their 20's but that is no argument for, allegedly, affording them some kind of protection in the Fourth Division.

They are more than ready for the Third, they are certainly equipped NOW for both the Second AND, in my view, international football. The Fourth Division retards progress. It does not allow ability to develop in its own good time.

The mention of Swansea's two leading goalscorers takes me onto the future - a future now surrounded by question marks - of John Toshack. There is a strong suspicion that his muscles are now starting to resemble finest grade porcelain. His absence, once again, through injury from the Wales team this week was a dreadful blow.

It is quite obvious that manager Mike Smith has to start preparing a fresh list of options immediately. With no more World Cup games until next season, he should use the forthcoming Home Championship to draft in players like Robbie and Jeremy - they are going to be there sooner or later . . . . and it should now be sooner.

Robbie is now approaching his form of mid-season; the U. E. F. A. Youth Cup no longer concerns Jeremy. I hope that manager Smith brings them both under starters orders in international football next month.

Swansea supporters will be glad to hear that three of this club's former players, Jan Bekker, Glen Davies and Carl Slee, are engaged in a new football adventure. They are playing for Bridgend Town, currently in the Welsh League but now aiming for a higher status.

The Mid Glamorgan club are applying for Southern League membership which, considering the fates of Llanelli and Lovell's Athletic and the struggles of Barry Town and Merthyr, is a step of considerable bravery.

There is no hesitation among the group of enthusiastic businessmen who have taken over the club which has such a record of recent success in the Welsh League. They are convinced that they have the finance to back such a move and have employed a full time fund raiser for quite a while now.

There is undoubtedly room for such a club in this Rugby-dominated area. Recently Bridgend gave Cardiff City a mighty score in the Welsh Cup semi-finals and all three ex-Swansea players were in fine form. Bekker, in particular, has been scoring busily all season.

There ground could do with some improvements but these are well in hand and the floodlights are already upto League standards. In these days of anxiety, it is good to hear that ambition in football is still thriving!

### Half Time Scores

A	Barnsley	V.	Southport	G	Huddersfield	v.	Aldershot
B	Bradford City	v.	Doncaster	H	Rochdale	v.	Hartlepool
C	Colchester	v.	Scunthorpe	J	Watford	v.	Workington
D	Crewe	v.	Bournemouth	K	Blackpool	v.	Cardiff
E	Darlington	v.	Brentford	L	Gillingham	v.	Wrexham
F	Exeter	v.	Southend	M	Liverpool	v.	Leeds

### SUNFINDER Motor Caravan Conversions

BY S.R.  
CARAVANS

FOR A CAMPING HOLIDAY, VISIT  
BANK FARM CAMPING PARKS, HORTON  
OPEN AIR HEATED SWIMMING AND  
PADDLING POOLS, RESIDENTS LOUNGE  
BAR & COFFEE LOUNGE. ADVANCE BOOKING  
RECOMMENDED  
RECOMMENDED THROUGHOUT EUROPE  
PRE-VIEWS WELCOME 'PHONE GOWER 228

GOWER  
PHONE  
228

### PARK FISH BAR

PARKWAY - SKETTY

SWANSEA

FOR QUALITY FISH  
CHICKEN  
and CONTINENTAL  
SPECIALITIES

Tom and Steve invite  
you to the

### Uplands Hotel

Swansea 57264

"Dart" in and have  
a "Double"

Snacks and best  
Whitbread Beers





## ON THE COMMERCIAL FRONT by Geoff Ford

For all enquiries relating to Ground and Programme Adverts Sponsorship etc., please contact:  
**THE COMMERCIAL MANAGER,**  
33, WILLIAM STREET, SWANSEA. Telephone 42182.

### SWANSEA CITY POOLS

#### PRIZES

**£700 WEEKLY PAYOUT**

STAR PRIZES £150, £75, £20

Plus Hundreds of Minor Prize Winners

#### NEW AGENTS REQUIRED

Why not join our team of Agents and become eligible for a Ground Concession Pass for the season? With generous commission, agents prizes, plus other benefits, being an Agent can be very worthwhile.

Please send me, without obligation, details of the Swans Pool. (I am over 18 years of age.)

NAME.....

(Block letters)

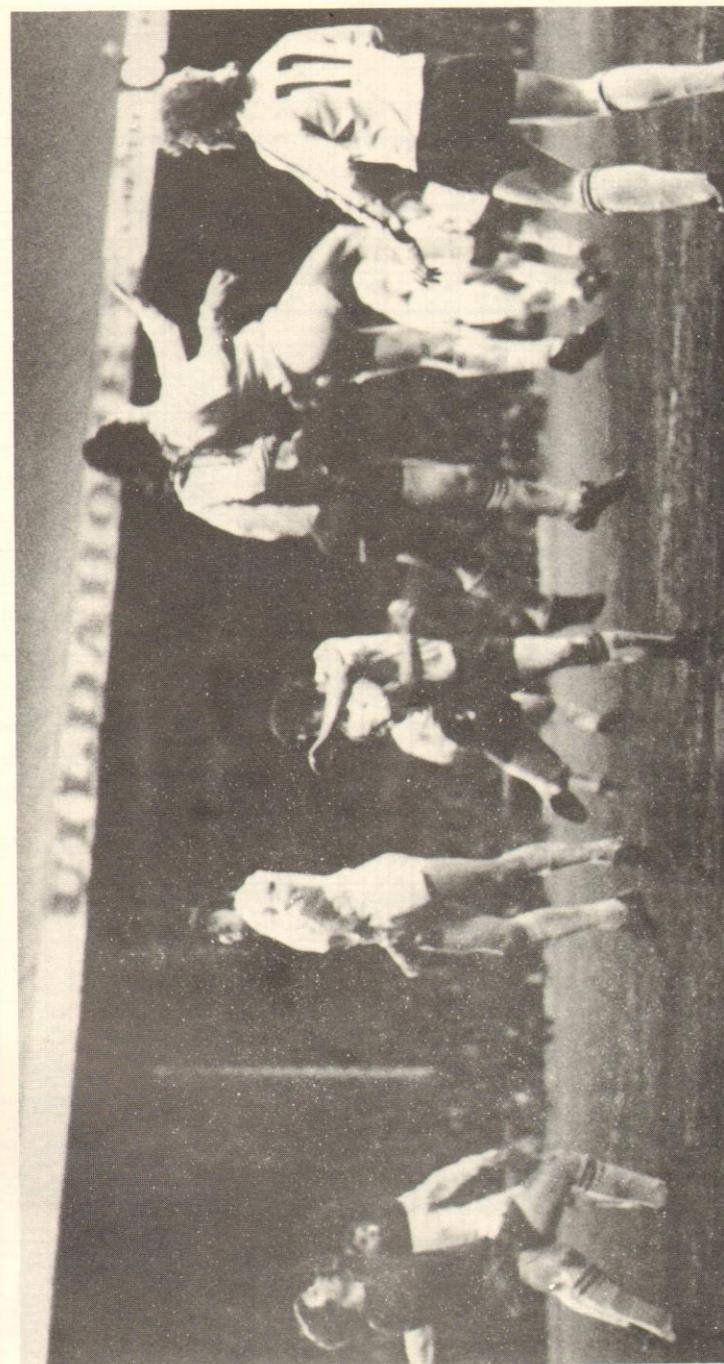
ADDRESS.....

Phone.....

### Match Ball Donors for Season 1976-77

D. J. Popham & Sons Ltd.  
Sea Beach Hotel.  
My Fathers Moustache.  
Swansea Auto Engine Services Ltd.  
Morris Bros.  
The City Tavern.  
The Dragon Hotel.  
North Gower Hotel.  
S.V.B. Contractors..  
B.A. Rogers Ltd.  
Thyssen Ltd.  
Cliff W. Bowen & Partners.  
Ashleys Restaurant.  
Swan Maid Ice Cream Ltd.  
D & B Meats.  
Isotemp (Heating & Ventilating) Ltd.  
5 Minute Car Wash.  
A. T. Morgan Car Sales.  
Linnard Sports Ltd.  
R. A. Preston (Engineering) Ltd.  
R. A. Preston (Electricals) Ltd.  
Harlech Estates Agency.  
Southville Garage (Swansea) Ltd.  
Reeds of Oxford Street.  
Rossette Sunshine Savouries Ltd.  
Village Market.

Quadrant Motor Services.  
Don Pepe Ladies Hair Stylists.  
Graham Harcourt (Printers) Ltd.  
R & W Motors.  
Strand Transport.  
Roger David Studios.  
Logo Mens Boutique.  
Jack Sullivan Ltd.  
Singleton Cafe.  
Garibaldi Inn.  
Uplands Hotel.  
Park Fish Bar.  
Sunfinder Motor Caravan Conversions.  
P.M.W. Davies.  
City Electro Diesel Services.  
C. & E. Motors Ltd.  
E.W.G. Sims. Barclays Bank.  
Mr. John Davies.  
A. D. Harris.  
W. Walters & Son Ltd.  
W. R. Jones, Steel Supply Co.  
R. Wellington, Society Club.  
Light Engineering Co. (Swansea) Ltd.  
W. Ballard & Sons Ltd.  
Antalrest Ltd.  
Arthur Birt, Langland Court Hotel.



Heads go up in this goalmouth scramble against Stockport



# STATISTICS- HOME FIXTURES

DATE		OPPONENTS		RFS		A.T		S.PC		W.E		D.B		G.SN		E.M		D.B		M.C		A.C		R.J		G.B		P.L		G.M		L.C		G.R		J.C		W.S		S.M		P.H		G.E		J.C		G.N		N.S		WMO																																																																																																																																																																																																																																																																																																																																																																																																																																																																																																																																																																																																																																																																																																																																																																																																																																																																																																																																																																																																																																																																																																																																																		
AUG 14		NEWPORT (FLC -1)		4-1	3281	*	*	*	*	*	*	*	*	*	*	*	*	*	*	*	*	*	*	*	*	*	*	*	*	*	*	*	*	*	*	*	*	*	*	*	*	*	*	*	*	*	*	*	*	*	*	*	*	*	*	*	*	*	*	*	*	*	*	*	*	*	*	*	*	*	*	*	*	*	*	*	*	*	*	*	*	*	*	*	*	*	*	*	*	*	*	*	*	*	*	*	*	*	*	*	*	*	*	*	*	*	*	*	*	*	*	*	*	*	*	*	*	*	*	*	*	*	*	*	*	*	*	*	*	*	*	*	*	*	*	*	*	*	*	*	*	*	*	*	*	*	*	*	*	*	*	*	*	*	*	*	*	*	*	*	*	*	*	*	*	*	*	*	*	*	*	*	*	*	*	*	*	*	*	*	*	*	*	*	*	*	*	*	*	*	*	*	*	*	*	*	*	*	*	*	*	*	*	*	*	*	*	*	*	*	*	*	*	*	*	*	*	*	*	*	*	*	*	*	*	*	*	*	*	*	*	*	*	*	*	*	*	*	*	*	*	*	*	*	*	*	*	*	*	*	*	*	*	*	*	*	*	*	*	*	*	*	*	*	*	*	*	*	*	*	*	*	*	*	*	*	*	*	*	*	*	*	*	*	*	*	*	*	*	*	*	*	*	*	*	*	*	*	*	*	*	*	*	*	*	*	*	*	*	*	*	*	*	*	*	*	*	*	*	*	*	*	*	*	*	*	*	*	*	*	*	*	*	*	*	*	*	*	*	*	*	*	*	*	*	*	*	*	*	*	*	*	*	*	*	*	*	*	*	*	*	*	*	*	*	*	*	*	*	*	*	*	*	*	*	*	*	*	*	*	*	*	*	*	*	*	*	*	*	*	*	*	*	*	*	*	*	*	*	*	*	*	*	*	*	*	*	*	*	*	*	*	*	*	*	*	*	*	*	*	*	*	*	*	*	*	*	*	*	*	*	*	*	*	*	*	*	*	*	*	*	*	*	*	*	*	*	*	*	*	*	*	*	*	*	*	*	*	*	*	*	*	*	*	*	*	*	*	*	*	*	*	*	*	*	*	*	*	*	*	*	*	*	*	*	*	*	*	*	*	*	*	*	*	*	*	*	*	*	*	*	*	*	*	*	*	*	*	*	*	*	*	*	*	*	*	*	*	*	*	*	*	*	*	*	*	*	*	*	*	*	*	*	*	*	*	*	*	*	*	*	*	*	*	*	*	*	*	*	*	*	*	*	*	*	*	*	*	*	*	*	*	*	*	*	*	*	*	*	*	*	*	*	*	*	*	*	*	*	*	*	*	*	*	*	*	*	*	*	*	*	*	*	*	*	*	*	*	*	*	*	*	*	*	*	*	*	*	*	*	*	*	*	*	*	*	*	*	*	*	*	*	*	*	*	*	*	*	*	*	*	*	*	*	*	*	*	*	*	*	*	*	*	*	*	*	*	*	*	*	*	*	*	*	*	*	*	*	*	*	*	*	*	*	*	*	*	*	*	*	*	*	*	*	*	*	*	*	*	*	*	*	*	*	*	*	*	*	*	*	*	*	*	*	*	*	*	*	*	*	*	*	*	*	*	*	*	*	*	*	*	*	*	*	*	*	*	*	*	*	*	*	*	*	*	*	*	*	*	*	*	*	*	*	*	*	*	*	*	*	*	*	*	*	*	*	*	*	*	*	*	*	*	*	*	*	*	*	*	*	*	*	*	*	*	*	*	*	*	*	*	*	*	*	*	*	*	*	*	*	*	*	*	*	*	*	*	*	*	*	*	*	*	*	*	*	*	*	*	*	*	*	*	*	*	*	*	*	*	*	*	*	*	*	*	*	*	*	*	*	*	*	*	*	*	*	*	*	*	*	*	*	*	*	*	*	*	*	*	*	*	*	*	*	*	*	*	*	*	*	*	*	*	*	*	*	*	*	*	*	*	*	*	*	*	*	*	*	*	*	*	*	*	*	*	*	*	*	*	*	*	*	*	*	*	*	*	*	*	*	*	*	*	*	*	*	*	*	*	*	*	*	*	*	*	*	*	*	*	*	*	*	*	*	*	*	*	*	*	*	*	*	*	*	*	*	*	*	*	*	*	*	*	*	*	*	*	*	*	*	*	*	*	*	*	*	*	*	*	*	*	*	*	*	*	*	*	*	*	*	*	*	*	*	*	*	*	*	*	*	*	*	*	*	*	*	*	*	*	*	*	*	*	*	*	*	*	*	*	*	*	*	*	*	*	*	*	*	*	*	*	*	*	*	*	*	*	*	*	*	*	*	*	*	*	*	*	*	*	*	*	*	*	*	*	*	*	*	*	*	*	*	*	*	*	*	*	*	*	*	*	*	*	*	*	*	*	*	*	*	*	*	*	*	*	*	*	*	*	*	*	*	*	*	*	*	*	*	*	*	*	*	*	*	*	*	*	*	*	*	*	*	*	*	*	*	*	*	*	*	*	*	*	*	*	*	*	*	*	*	*	*	*	*	*	*	*	*	*	*	*	*	*	*	*	*	*	*	*	*	*	*	*	*	*	*	*	*	*	*	*	*	*	*	*	*	*	*	*	*	*	*	*	*	*	*	*	*	*	*	*	*	*	*	*	*	*	*

FIGURES INDICATE GOALS SCORED

\* PLAYED

† SUBSTITUTE

◆ SUBSTITUTE USED

# STATISTICS- AWAY FIXTURES

STATISTICS - AWAY FIXTURES										RESULTS		ATTENDANCE																		
DATE		OPPONENTS		RESULTS		ATTENDANCE																								
AUG 17		NEWPORT (FLC -1)		0-1		*	*	*	*	*	*	*	*	*	*	*	*	*	*	*	*	*	*	*	*	*	*	*	*	*
25		BRADFORD CITY		1-4		*	*	*	*	*	*	*	*	*	*	*	*	*	*	*	*	*	*	*	*	*	*	*	*	*
27		STOCKPORT COUNTY		0-3		*	*	*	*	*	*	*	*	*	*	*	*	*	*	*	*	*	*	*	*	*	*	*	*	*
31		CHESTER (FLC-2)		3-2		*	*	*	*	*	*	*	*	*	*	*	*	*	*	*	*	*	*	*	*	*	*	*	*	*
SEPT 11		HUDDERSFIELD TOWN		2-2		*	*	*	*	*	*	*	*	*	*	*	*	*	*	*	*	*	*	*	*	*	*	*	*	*
25		ALDERSHOT		2-2		*	*	*	*	*	*	*	*	*	*	*	*	*	*	*	*	*	*	*	*	*	*	*	*	*
OCT 9		TORQUAY UNITED		1-2		*	*	*	*	*	*	*	*	*	*	*	*	*	*	*	*	*	*	*	*	*	*	*	*	*
22		NEWPORT COUNTY		2-0		*	*	*	*	*	*	*	*	*	*	*	*	*	*	*	*	*	*	*	*	*	*	*	*	*
30		CREWE ALEXANDRA		1-3		*	*	*	*	*	*	*	*	*	*	*	*	*	*	*	*	*	*	*	*	*	*	*	*	*
NOV 2		BOLTON (FLC-3)		1-5		*	*	*	*	*	*	*	*	*	*	*	*	*	*	*	*	*	*	*	*	*	*	*	*	*
13		HALIFAX TOWN		0-1		*	*	*	*	*	*	*	*	*	*	*	*	*	*	*	*	*	*	*	*	*	*	*	*	*
DEC 4		WATFORD		0-2		*	*	*	*	*	*	*	*	*	*	*	*	*	*	*	*	*	*	*	*	*	*	*	*	*
27		BOURNEMOUTH		1-1		*	*	*	*	*	*	*	*	*	*	*	*	*	*	*	*	*	*	*	*	*	*	*	*	*
JAN 1		EXETER CITY		0-2		*	*	*	*	*	*	*	*	*	*	*	*	*	*	*	*	*	*	*	*	*	*	*	*	*
8		ROCHDALE		0-1		*	*	*	*	*	*	*	*	*	*	*	*	*	*	*	*	*	*	*	*	*	*	*	*	*
22		DARLINGTON		0-4		*	*	*	*	*	*	*	*	*	*	*	*	*	*	*	*	*	*	*	*	*	*	*	*	*
FEB 7		WREXHAM (WLC -5)		1-4		*	*	*	*	*	*	*	*	*	*	*	*	*	*	*	*	*	*	*	*	*	*	*	*	*
12		BARNLEY		0-1		*	*	*	*	*	*	*	*	*	*	*	*	*	*	*	*	*	*	*	*	*	*	*	*	*
26		DONCASTER ROVERS		1-2		*	*	*	*	*	*	*	*	*	*	*	*	*	*	*	*	*	*	*	*	*	*	*	*	*
MAR 11		SOUTHPORT		3-1		*	*	*	*	*	*	*	*	*	*	*	*	*	*	*	*	*	*	*	*	*	*	*	*	*
15		SOUTHEND UNITED		2-1		*	*	*	*	*	*	*	*	*	*	*	*	*	*	*	*	*	*	*	*	*	*	*	*	*
26		BRENTFORD		0-4		*	*	*	*	*	*	*	*	*	*	*	*	*	*	*	*	*	*	*	*	*	*	*	*	*
APRIL 8		COLCHESTER UNITED				*	*	*	*	*	*	*	*	*	*	*	*	*	*	*	*	*	*	*	*	*	*	*	*	*
16		SCUNTHORPE UNITED				*	*	*	*	*	*	*	*	*	*	*	*	*	*	*	*	*	*	*	*	*	*	*	*	*
18		HARTLEPOOL				*	*	*	*	*	*	*	*	*	*	*	*	*	*	*	*	*	*	*	*	*	*	*	*	*
30		WORKINGTON				*	*	*	*	*	*	*	*	*	*	*	*	*	*	*	*	*	*	*	*	*	*	*	*	*
MAY 14		CAMBRIDGE UNITED				*	*	*	*	*	*	*	*	*	*	*	*	*	*	*	*	*	*	*	*	*	*	*	*	*
										FIGURES INDICATE GOALS SCORED		* PLAYED		† SUBSTITUTE		♦ SUBSTITUTE USED														
</																														

FIGURES INDICATE GOALS SCORED

\* PLAYED

† SUBSTITUTE

◆ SUBSTITUTE USED



## ISOTEMP (Heating & Ventilating) Ltd.

DUCTING AND SHEET METAL WORK SPECIALISTS  
UNIT 7, BLAENWERN, CWMBRAN. Telephone 67421/2

*Wish the "Swans" a Successful Season*

# 5

**THE FIVE MINUTE  
CAR WASH**

THE STRAND SWANSEA

£3.00 per ammun plus 35p all week  
"A" Membership — £17.50 per annum  
Any Time plus V.A.T.  
"B" Membership — £15.00 per annum  
Monday to Thursday plus V.A.T.

NO SURCHARGES  
OPEN — 8.30 - 5.30 Mon - Sat  
9.00 - 1.00 Sunday

THE STRAND SWANSEA

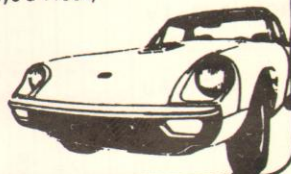
TOP OF THE MOTORING LEAGUE . . .

**A. T. Morgan  
Car Sales**

KILLAY GARAGE KILLAY SWANSEA

Tel.: 24068

QUALITY USED CARS and  
LIGHT COMMERCIALS ALWAYS AVAILABLE  
(Open Seven Days a Week)



WE SPECIALISE IN:-

**SHOOTING**

The best Guns in the Business  
Plus for the youngster  
the DIANA AIR WEAPON

SSA ORIGINAL ASI

DARTS, the Best — RUGBY and SOCCER, a choice of everything you need  
SQUASH — WATER SPORTS — TENNIS — CRICKET — RESTRING

**ANGLING**

Comprehensive selection of Rods,  
Reels, Lines and accessories for the  
Game, Sea and Course Fisherman.

Top Stockists of MILBRO

**LINNARD SPORTS LTD.**

25 HIGH STREET, SWANSEA

Telephone 55631



HELP TO KEEP SWANSEA A SAFE CITY  
AND DRIVE WITH

\*\*\* CARE  
\*\*\* COURTESY  
\*\*\* CONSIDERATION

ISSUED BY ROAD SAFETY COMMITTEE, WEST GLAMORGAN  
COUNTY COUNCIL

## B. A. ROGERS LTD.

ROAD HAULAGE CONTRACTORS

ABBAY SITE, NEATH ABBAY WHARF  
SKEWEN, GLAM. Tel. 3275

*Wish the "Swans" a successful season*

CAROL & MICK invite you to visit the

## Garibaldi Inn

(150 yards from the Vetch Field)

*They also wish the "Swans" a successful season*



WE OFFER OUR SINCERE WISHES FOR A SUCCESSFUL SEASON

Head Office : BYNEA — LLANELLI — CARMS.



SELLING OR BUYING  
CONSULT

CLIFF W.  
**BOWEN**  
& PARTNERS

17a, PAGE STREET,  
SWANSEA

Tel.: 42228/69686

PROPERTY CONSULTANTS

**Ashleys**

RESTAURANT

at the  
ASHLEIGH HOTEL, MUMBLES  
Telephone: Swansea 60554

Wedding Receptions, Dinner and  
Celebration Parties catered for

Lunch 12.00 to 3.00,

Dinner 7.00 to 11.30

**Swan Maid Ice Cream Ltd.**

ON SALE HERE TODAY

NUMEROUS SUCCESSIVE AWARD WINNING DIPLOMAS

*Over 10 Different Choices of Taste to choose from*  
Wholesale and Retail - Phone Swansea 34361

**D & B Meats**

HIGH CLASS BUTCHERS & FRUITERERS

222, GORS AVENUE  
TOWNHILL  
SWANSEA 582593

GRAIGLWYD  
TOWNHILL  
SWANSEA 55398

87, CARNGLAS ROAD,  
TYCOCH  
SWANSEA 23497

*Deep Freeze and Catering Supplies - Welsh Beef, Lamb and Pork  
Sausages & Beef Burgers Fresh Made Daily. Saving Club in operation*

## IN OPPOSITION TODAY

### ADDISON BRINGS LIFE, FIGHT & HOPE TO COUNTY

There is a famous saying in show business that "the impossible we can do it at once; a miracle takes a couple of days". The 'impossible' for Colin Addison when he took over at Newport County was to get the team restored in confidence and winning a game or two.

That was accomplished within a few weeks. Now comes the 'miracle' of keeping them alive and healthy in the Football League. As the lean, tireless Addison says with total determination and dedication: "we're working on that as hard as we can go in the time left."

It is worth noting that Newport - in contrast to the side that the Swans trounced in the Welsh Cup a couple of months ago - are putting together some highly impressive results. Their last three home games have produced Five points.

First a convincing win against Brentford who hammered four goals into Swansea's net last Saturday, then a beating of promotion chasing Bradford City who captured the Swans home League ground record recently; then, earlier this week, a battling draw against Barnsley.

Skipper Steve Derrett, the former Wales international and Cardiff City defender, maintains: "We know we are not the worst side in football. We've believed that all along. Now we are proving that we can not only match, but also beat, the best teams around."

A great deal of Newport's struggles this season have, of course, to do with their pitch. It has not stood up to the terrible beating from the weather and game after game has been postponed. Now the rain has slackened, the pools of water have drained away at Somerton Park... and Addison has the show on the road.

No young manager is better equipped to perform a miracle. It was this former Arsenal player who accomplished the famous feat of then Southern League Hereford United beating Newcastle United in the F.A. Cup. That most famous cup run of modern times (they also beat Northampton Town and gave West Ham United a terrible scare) won Hereford the votes to be admitted to the League.

Player-manager Addison did not stop there. He promptly led Hereford out of the Fourth Division in their first season and established them in the Third. Next he moved on to football in South Africa - but is now relishing his latest challenge in British football.

The County side of experienced and talented players put together during Jimmy Scoular's year of control at Somerton Park is now finding its feet. Although they won at Southport earlier this season and have gained draws from trips to Brentford Southend and Rochdale, it is away form which produces most problems.

Their away scoring record of six goals from 17 matches is the worst in the Football League. But once fine players like Brian Clark, Eddie Woods and Tony Villars get the taste of finding the back of the net, this County side can upset anyone and break clear of the re-election zone.

**STEVE DERRETT** (Full back or Central Defender). Joined Cardiff City from school and made his first team debut in a European Cup Winners Cup match in November 1967. Was a regular member of the First team squad over the next few seasons and was transferred to Carlisle in the summer of 1972. Had a short spell with Aldershot in 1973 and was transferred to Rotherham. Joined Newport in 1975 on a free transfer. Has played four times for Wales.

**GARY PLUMLEY** (Goalkeeper). Born Birmingham. Gary is the son of Coventry City Secretary, Eddie Plumley, himself a former goalkeeper. Gary joined Leicester City from school at the start of season 1972-73 and last year was a regular member of the Reserve side. He joined Newport County in the Close season.



# HARLECH



ESTATES AGENCY

124 WALTER ROAD SWANSEA SA1 5AF Telephone 43745-6

**MORTGAGE AND INSURANCE BROKERS**

We offer Personal, Professional Service  
for selling and buying

No hidden Fees

Complete Mortgage Facilities

## Southville Garage (Swansea) Ltd

HONDA Main Dealers  
Cars & Generators

For Economy, Reliability,  
Performance

90 Walter Road, Uplands, Swansea  
Tel. 56682

## REEDS

OXFORD STREET  
SWANSEA

High Class Pastry, Cooks  
and Confectioners

## Rossette

### SUNSHINE SAVOURIES LTD.

8 Cwmdru Industrial Estate, Fforestfach, Swansea  
Tel.: Swansea 34601

Suppliers of Pies, Pasties, Sausage Rolls  
and Savoury Goods.  
All Parties Catered For  
Free Delivery



## WHITBREAD WALES LTD.

AT HALF AND FULL TIME  
ENJOY A WHITBREAD

ONLY WHITBREAD BEERS ON  
SALE IN BOTH BARS.

## Village Market

LINKSIDE DRIVE

The Friendly Store with all  
Your Food and Drink requirements

PENNARD

Your Spar Grocer in Gower



## WITH THE RESERVES

... from Roy Saunders

The Welsh League side produced one of the best performances of the season in a 3-3 draw against Briton Ferry. We played all the football, scored some fine goals and dropped a point only because of some mistakes in defence due to inexperience more than anything else.

Our side had no professional over 18 and we brought in a couple of trialists from Cardiganshire in right-back John Evans and left winger Lynn Evans. We believe that this club has a right to players from West Wales and we are concentrating talent spotting on this area.

In the circumstances, we played with tremendous promise. Lynn scored a goal that will give him confidence and our other marksmen were Clinton Davies and Nigel Stevenson.

After the encouragement of that performance, I thought we would take both points from a home game against Ammanford - instead we lost both! We produced all the attacking football without scoring and it was a mistake by John Evans - whom we brought back for a quick second chance - that gave Ammanford a 1-0 victory. John still played promisingly and Stephen Morris had an outstanding game at centre - back. Paul Harris was given a run out after his spell of inactivity and it was encouraging to see Gary Moore returning after his so unlucky run of injuries.

## BUSY DAYS FOR JIMMY SCOULAR

There is one intriguing flavour to this afternoon's clash between the two Fourth Division sides of Welsh football: it brings together the two clubs for which Jimmy Scoular has worked this season. First he was manager of County; now scout to the Swans.

In fact, Jimmy's last game as manager of the Gwent side was here at the Vetch Field when they lost to the Swans in the Welsh Cup! He had resigned a few days earlier and was on the point of handing over to County's new manager, Colin Addison. "I was delighted when Jimmy accepted my offer to work for us," says Harry Griffiths. "He is one of the most professional men I have known in football. His views on players, his assessment of opposing sides and his contribution in terms of advice and experience will be invaluable here."

The former Cardiff City manager is already working hard and driving hundreds of miles looking at players who might serve the Swans well next season. "It is important to know in advance the players who might become available and prove useful to us next season," says Harry.

"In his year as a First Division player with Portsmouth and Newcastle and as an international for Scotland, Jimmy has acquired a knowledge of a player's ability that is second to none. I have a thick file already on the results of his scouting around the country."

In his spare time, Jimmy also takes a look at rivals whom the Swans will play in a week or two. "In general terms, 'front running' provides only a few guidelines," says Harry. "No two games are alike and impressions can sometimes be misleading - but we are lucky in having a man of such expertise that he can make allowances for these factors and still provide useful answers."