

BINGO

GRAND BINGO CLUB PORT TALBOT

SESSIONS AT 3.0 p.m. and 7.0 p.m.

EMPIRE BINGO CLUB NEATH

EVENING SESSIONS 7.30 p.m.

AFTERNOON SESSIONS 3.30 p.m.

BIG SNOWBALL EVERY NIGHT

MEDINA BINGO CLUB NEATH

NOON SESSIONS 12.0 a.m.

AFTERNOON SESSIONS 3.30 p.m.

EVENING SESSIONS 7.30 p.m.

LAST SESSIONS 8.30 p.m.

BIG SNOWBALL TO BE WON

SWANS

EA

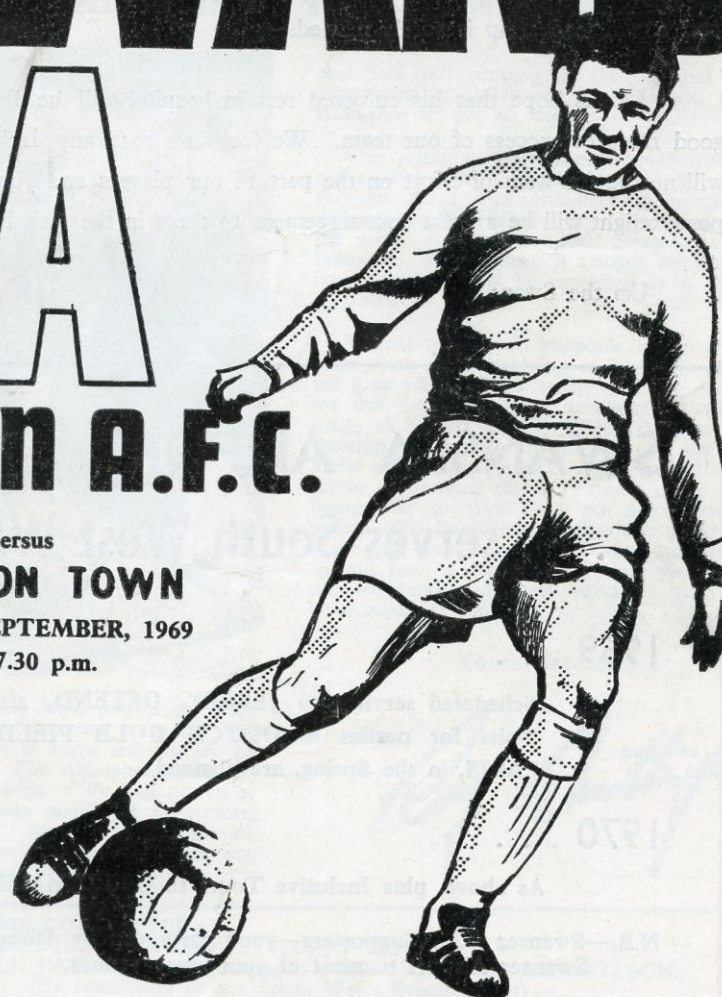
TOWN A.F.C.

Versus

SWINDON TOWN

TUESDAY, 2nd SEPTEMBER, 1969

Kick-off 7.30 p.m.



1/-

From the Board Room . . .

Our delight at welcoming the League Cup holders, Swindon Town, to the Vetch Field this evening is tinged with regret that our No. 1 Supporter and Chairman, Trevor Wood, is not here to greet them personally. As many of you will be aware he has undergone a major operation and we feel sure that all supporters will join us in wishing him a speedy and complete recovery. At a time when we are confronted by many problems, his mature experience and sound leadership is sorely needed.

Let us hope that his enforced rest in hospital will be brightened by good news of success of our team. We feel sure that any lack of success will not be for want of effort on the part of our players and your vocal support tonight will be a great encouragement to them in the task before them.

Up the Swans.

SWANSEA AIRPORT ... serves South West Wales

1969 . . .

Scheduled services to JERSEY, OSTEND, also Day Visits for parties to DUTCH BULB FIELDS and PARIS, in the Spring, are planned.

1970 . . .

As above, plus Inclusive Tours to OBERAMMERGAU.

N.B.—Swansea F.C. Supporters—your party can fly Direct from Swansea Airport to most of your away venues.

Enquiries to :- Swansea 24063.

Swansea Town Football Club

President :
Board of Directors :
Chairman :
Vice-Chairman :

P. E. HOLDEN

TREVOR J. WOOD
DAVID GOLDSTONE
RICHARD ENGLERT
TERRY FRANCIS
IVOR PURSEY
MALCOLM STRUEL
PETER WALTERS
DEREK WIGNALL
GORDON DANIELS

Secretary :
Hon. Medical
Officer :

Dr. ELWYN JAMES



MANAGER'S COMMENTS



and half our running for the ball and the supporting of colleagues stopped, and left Aldershot to get on top.

Our result at Hartlepoons though 3-0 is not a true picture of the game. We lost through three bad goal-keeping mistakes and not being able to score at least one of the many chances we had created. Our failure to take chances is causing me much concern and must be remedied as quickly as possible.

Having to play Hartlepoons away then York away over a period of five days gave me a wonderful opportunity to stay away for five days and our headquarters were made at Scarborough. This enables me through living with the players to get to know them much quicker. The lads themselves appreciated this very much as we are being able to train and do much more match drills by staying in Scarborough than if we had spent most of the week travelling to and fro. I hope by the time you read this we have redeemed ourselves with a good result at York.

Yours sincerely,

Two games have been played since my last remarks have been read by you. The first was Aldershot at home and the second Hartlepoons away. The Aldershot game was a game of two halves. We had played in the first half some good and penetrating football creating several goal scoring chances and deserved to be at least one goal in front at the change over. The sec-

PROGRAMME COMMITTEE :

Joint Chairmen : DEREK WIGNALL, TERRY FRANCIS.
Editor : BILL PATON. Photography : RON THOMAS, LEN PITSON.
(By permission of the South Wales Evening Post)
Design : BOB PRESSDEE. Printer : TRERISE LTD.

PROGRAMME No. 2.

LEAGUE DIVISION IV

SEASON 1969/70

Your Cleveland Dealer

ACKLANDS SWANSEA 54119

YORK STREET, SWANSEA

Discol Premium Guaranteed Grades xxxx

Confidence in Your Tank

Always on the Ball

Your Satisfaction Our Goal

Top of the League in Car Sales

Hire Purchase Arranged Always a Draw

Personal Attention of Sales Manager M. Hillier

Crypton Service Available

Our Battery Centre Scores

Storage Service for Cork Ferry

BELL FRUIT
(South Wales) LTD.

SALE OR RENTAL

JUKE BOXES

FRUIT MACHINES

RENTAL FROM £4 per week.
24 hour service

Ring Swansea 52694
Cardiff 22681

TABERNACLE STREET, LANDORE, SWANSEA
IVOR HOUSE, BRIDGE STREET, CARDIFF



For all 'Do It Yourself' materials
call at—

Gregor Bros. Ltd.

BATHURST STREET
SWANSEA

Prompt deliveries to all areas
Phone : SWANSEA 54165

HURNS

MINERAL WATER CO. LTD.

47, KING EDWARD LANE
SWANSEA Tel. 57212

Factors to the Licensed Trade
Prompt Service Always
Agents for Schweppes, Britvic, etc.

MORRIS BROS.

(Props. : E.O. & R.E.G. MORRIS)

YSGOL STREET, ST. THOMAS, SWANSEA

FOR HIRE

LUXURY COACHES— 12, 20, 29, 41, 45, and 52 Seaters.

HAULAGE CONTRACTORS— Prompt attention and service to all parts.

PLANT HIRE— Specialists in Heavy Machinery.

Telephones : SWANSEA 50100/52077/8

OUR VISITORS - SWINDON TOWN

No football fan need be reminded about the wonderful achievements of Swindon Town last season. Not only did they win the Football League Cup, but also promotion to the 2nd Division, only missing the Championship on goal average.

Danny Williams, their Manager, has now left to join Sheffield Wednesday and has been succeeded at Swindon by Mr. Fred Ford, formerly Manager of Bristol Rovers.

They have, in Don Rogers, one of the most dangerous wingers in the game today and very many of the Managers in the 1st Division have made unsuccessful offers for his signature.

Swindon have made a wonderful start in their return to Division II and are now well placed in the League. They have recently taken 3 points from Cardiff City and defeated Aston Villa at Villa Park. We would like to take the opportunity of wishing them continued success in the games ahead.

SWANSEA TYRE Co

OXFORD STREET - SWANSEA

TELEPHONE : 55530

New Tyres from 72/-

Remoulds from 41/6

Petrol - Batteries

Wheel Balancing

Electronic Engine Tuning

Brakes - Servicing

Green Shield Stamps

Personal Attention

PAY AS YOU DRIVE MOTOR INSURANCE

25% DEPOSIT & 11 MONTHLY
PAYMENTS

Special Reduced Terms for

FORD OWNERS

GOWER FINANCE

INSURANCE BROKERS

51 Mansel St.,

Swansea

53310

19 Murray St.

Llanelli

Phone 4184

PETER HARRIS

* TARMACADAM CONTRACTOR * ASPHALT SPECIALIST *

6 ALDER WAY, WEST CROSS, SWANSEA

Don't break the Law with Bad
Tyres. Get New Ones from—

Town Tyre Services

Wales Gas Board Industrial Estate

Neath Road, Morriston, Swansea

Tel. : Swansea 73431

R. J. SYKES

Specialists in Car Body Repair
Motor Fitting, Cellulosing

HAFOD STREET,

UPPER STRAND

SWANSEA Telephone 52964

Football Combination

1969/70 COMBINATION TEAM



Our Reserve match against Birmingham, which attracted over 1,200 spectators, was in the opinion, of those who watched this game, "One of the best matches seen at the Vetch Field, since our return to the Combination."

The Birmingham Team, which included such Players as Colin Green, Welsh International, Georgie Johnstone for whom Brum paid Arsenal £22,000, and played for Cardiff City before joining Arsenal, J. Sleeuwynhoek ex-Aston Villa.

The game was played at a fast pace, and the class of football from both teams was excellent.

Geoff Thomas excelled himself, playing in the unfamiliar role of link-man, splaying passes, in all directions, with great accuracy.

Terry Cotton in a similar role also played extremely well. The forward line, who were the front 4, in this 4-2-4 formation, made the job of the link-men far easier, by their very intelligent running, off the ball. Although this was a draw 0-0 it was really a moral victory for Swansea Town.

We feel sure that the spectators who attended this match, have not yet finished talking about it, so it is reasonable to expect the gates, in the future, are likely to increase.

B H. DAVIES Motors (Swansea) Ltd.

SINGER &
RETAIL DEALERS
USED CAR SPECIALISTS
5 Mins. from High Street Station
Swansea
Telephone : Swansea 52159

Arthur I. Gardner M.P.S.

Family Chemist

36 NEATH ROAD, HAFOD
SWANSEA Tel. 55501

Action Replay



LIVERPOOL v. SWANSEA TOWN 1965

Jubilation from Noel Dwyer and the late Brian Purcell, as Liverpool full-back Moran shows his disgust on missing a penalty. Star of the match Dwyer is airborne to cut off this cross.

Swansea went on to win 2-1, and reach the semi-final of the F.A. Cup for the second time in the history of the Club.



If your Goal is "FIRST DIVISION" Produce you MUST see :-

COAKLEY - GREENE

High Class Fishmongers
THE MARKET, SWANSEA
Tel. : 53416

Established over 100 years.

BILLY JOHN

34, THE MARKET, SWANSEA

Tel. : 53863

For Selected Fruit

Let us Recondition your engine
or supply your engine parts.

Swansea Auto Engine Services Ltd.

MEADOW STREET,
MAYHILL, SWANSEA
Tel. : SWANSEA 32222 and 32614

NEXT MATCH - SOUTHEND UNITED

Southend United was established in September 1906 when they played in Division II of the old Southern League. In 1920-21 they joined the Football League and played in the Third Division South as it was known then. They remained in this Division until 1957-58 when the League was re-organised. Subsequently they played in the Third Division until relegated in 1965/66.

In their history, Southend have had two homes, at Roots Hall and The Kursaal. They moved back to Roots Hall Stadium in August 1955 and it is now their permanent home. The capacity of Roots Hall is over 40,000 but their biggest recorded gate was against Birmingham City in the F.A. Cup in January 1957 when 28,059 were admitted. The highest recorded receipts were against Manchester City again in the F.A. Cup in January 1956 which was £5,248. Their most expensive player to date is Phil Chisnall, a former Busby Babe who moved to Liverpool initially for a fee of £15,000.

In an effort to increase their revenue from off field activities, United are unique in that their car park is used every Tuesday and Thursday as a market where one can purchase anything from a safety pin to an overcoat.

ASTLEY SAMUEL LEEDER and SON.

L. WYNNE DAVIES, F.R.I.C.S., F.A.I.
J. MYRDDIN LEWIS, F.A.I., F.S.V.A.
DOUGLAS S. WILLIAMS, A.R.I.C.S.

CHARTERED AUCTIONEERS AND ESTATE AGENTS
SURVEYORS AND VALUERS, RATING CONSULTANTS
49, MANSEL STREET
SWANSEA

Undertake the following work for Clients :-

Sales and Valuations of Houses, Shops, Factories, Farm, Investment Properties and Licensed Premises.
Sales and Valuations of Furniture, Works of Art, and Household effects.
Plant and Machinery Sales and Valuations.
Rating Valuations of all Classes of Property.
Town and Country Planning Appeals.
Estate Development and Management of Town and Country Properties.

Telegrams :
LEADING, SWANSEA

Telephone :
SWANSEA 55891

24 Hour Telephone Answering Service.

We always play the Game—

BERT VEALE (MUSICAL) LTD.

40, ALFRED STREET, NEATH
Full range of all Musical Goods in stock—
AMPLIFIERS - DRUMS - GUITARS - ORGANS -P.A. SYSTEMS (all makes) etc.
Tel. : NEATH 2825

JOHN JAMES

AUCTIONEER

VALUER

UPLANDS SALEROOM (REAR OF WAYNES) UPLANDS - SWANSEA
Telephones : 56938 55187

Valuations of Antiques—
Paintings, Silver and Objets D'art for all purposes.



PHOTO QUIZ

Do you know which Swansea Players are pictured below? If so, send the Post Card provided, with your answer to Photo Quiz, Vetch Field, Swansea, stating which Player each negative represents. The first correct entry received will win Two Stand Seats, for the next home League match.

The solution will be published in our next programme.



A



B



C

The Winner of Quiz No. 1 was

DAVID BENNETT, 72 EMLYN ROAD, MAYHILL, SWANSEA.

A. David Gwyther. B. Brian Evans. C. Len Allchurch

Face in the Crowd



Will the owner of the encircled Face collect Two Centre Stand Tickets, from the Secretary for the next Home game.

Watch for next face in the crowd.

WATCH FOR THE CAMERAS.

Secretary's Points

A number of spectators have written in, asking that our mid-week matches kick-off at 7.15 not 7.30 so that they can be home at a reasonable hour.

This matter has been considered previously, and the consensus of opinion is that 7.30 p.m. is the most convenient time, for the majority. Furthermore, practically all other League Clubs kick-off their evening matches at this time. We do try to please everybody, so we hope that the minority of spectators, who may be inconvenienced, will bear with us.

We regret the inconvenience caused by our not being able to open the East Bank. The decision to keep it closed, was taken in the interest of safety of the spectators, because of the very bad state of the Terracing. The terracing has now been renewed — safety is assured and the Club hopes that henceforward it will be full to the brim with spectators.



Yours sincerely,

Gordon Daniel

**Auctioneers and Estate Agents—
Surveyors, Valuers,**

DAVID HENRY MALCOLM JONES & CO.

WILLIAM G. LEWIS, A.A.I., F.I.A.S.
MALCOLM H. W. JONES

41, MANSEL STREET,

SWANSEA.

Tel. 0792 - 51064/5

Valuations for all purposes including Rates and Compulsary Acquisition, Auction Sales, Plans, Surveys, and Estate Management, Advisors on all aspects of New, Residential and Commercial Developments.

Star of the Week

ABE FREEDMAN CUP



TABLE	Points
BRIAN EVANS	3
GEOFF THOMAS	3
DAVID GWYTHYR	2
LEN ALLCHURCH	2
TONY MILLINGTON	1
HERBIE WILLIAMS	1

Brian received most votes from the Supporters for the Aldershot match.

Choose your Star of the Match. The winner at the end of the season with the most points will be nominated Player of the Year and receive the ABE FREEDMAN CUP at the Club Dinner.

Please vote on the Post Card provided.

DEREK A. JENKINS

82/86, SAMLET ROAD
LLANSAMLET, SWANSEA
Tel.: 73264

24 Hour Recovery Service
Accident Damage Insurance Claims
Cellulosing Panel Beating
All at Comprehensive Prices



SIGNS! By MARNEON SIGNS LTD.

37, KING EDWARD ROAD
SWANSEA. Tel. 57796

Illuminated Fascias
Neon Tube Makers,
Signwriting, Engraving,
Sheet Metal Work.

Estimates Free.
24 hr. Maintenance
Service.

JOINERY MANUFACTURERS

FUNERAL DIRECTORS
24 Hour Service.

D. J. BUTLER LTD.

Shop & Showrooms
Workshops & Reg. Office
LLETTY-NEDD, PENYDRE
NEATH Tel. 4662

Record Choice

Fill in the Post Card provided for Your Record Choice, to be played at future Home games by the Dynamic Top Rank Disc Jockey

TONY WYNNE-JONES

"Swing with Wynne"

Records by courtesy of Messrs. David Evans Co. Ltd.

THOMSON and THOMAS Scaffolding

8 WHITTINGTON STREET, NEATH Tel.: 3101

ESTIMATES FREE!

PROMPT ATTENTION ALWAYS!

Yard—'Riverside'. Rear Brickyard Cottages, Neath.

FOOTBALL FANS!—You have all you want here,

WEEKEND MOTORIST or RALLY FEIND—We have all you may require at

CENTRAL SPEED EQUIPMENT

WINDSOR ROAD, NEATH

Largest Stock of Motor Accesories in South Wales.

TYRES !

BATTERIES !

at **TRADE Prices**

TYRE HOUSE, COCKETT

270 Cockett Road
(Adj. Croft Garage)

SWANSEA 33299

All Makes

New or Remould

Fitted while-u-wait

NEATH TYRES SERVICES

The Green

(Behind Rly. Stn.)

NEATH 4011

Abertawe Fresh and Frozen Foods Ltd. Phones: 50797

THE STRAND, SWANSEA

50798
53101
50762

Suppliers to High Class Hotels and Restaurants of all

MEATS, POULTRY, FISH, VEGETABLES, etc.

SMOKED SALMON SPECIALISTS.

Schoolboy Page

By invitation of the Chairman, tonight's Schoolboy Guest Team is St. Joseph's Junior's Team who play in the Swansea Schools League under the guidance of Mr. F. Keane and Mr. P. J. Dooley, the Sports Masters, and Mr. W. P. Dooley the Headmaster.

In Season 68/69 their record was, Played 12, Won 12, with 37 goals for, and only 3 against. Tony Delia and Sean Carroll were Captain and Vice-Captain respectively of Swansea School Boys Junior Side. We all wish them every success for the future.



Mr. P. J. Dooley R. Coughlin S. Murphy C. Dorrell K. Williams A. Jones M. Horgan S. Govier P. Cushley R. Davies A. Williams Mr. W. P. Dooley J. Colclough N. McCarthy Mr. F. Keane S. Carroll A. Delia P. Thomas M. Thomas

Next Schoolboy Guests are the Intermediate side of Bishop Vaughan School.

G. REES (General Builder)

Yard:
RECTORY ROAD, NEATH Tel. 3314
Private Address:
53, GROVES ROAD, WESTERMOOR
NEATH

Specialities:
Plastering! Tiling! Slating! Conversion
and Improvement Grants! Home and
Shop Maintenance.

Prompt attention. Estimates Free.
Member of the
Federation of Master Builders

JOHNS BROS. (NEATH) LTD.

MILLANDS ROAD, NEATH
Telephone: 2065

Steel & Alloy Tipping Body Specialists.
Units designed and built to Customers
Requirements.

Main Agents for TELEHOIST,
ANTHONY/AUTOLIFT TIPPING
GEARS.

Stockists for EDBRO.

COLIN PRIDDEY LANDORE SWANSEA

Proudly present a new concept in car-washing for **2/6** 'BEATALL'
AUTOMATIC—Yes our machine is really automatic.
LOW COST—Only 2/6. The whole operation is controlled by a coin in the slot.
HIGH SPEED OPERATION—A car is washed every 2 minutes.
MINIMUM INCONVENIENCE—

The customer stays in his car. Drive in—Drive out!

TUDOR EVANS

56/57 THE KINGSWAY
SWANSEA

for

ALL SURGICAL SUPPLIES

Including: Ankle & Knee Supports,
Litesome & Body Belts, and Health
Lamps (Phillips, Barber & Hanovia)

Telephone: 54347

NIDUM TRAVEL LTD.

Whether you're travelling for Business or
Pleasure, contact us for Courteous and
efficient service—

12, WIND STREET
NEATH

Tel.: Neath 4834

V. & J. DOWDLE LTD.

CHEMISTS

Broughton Pharmacy
Blaenymaes
Swansea

Waunwen Pharmacy
Carmarthen Road
Swansea

A. P. DAVIES

ELECTRICAL CONTRACTOR

41, CIMLA ROAD
NEATH.

Tel.: 4905

For all Domestic and Industrial
Electrical Work.

Re-Wiring, Maintenance, etc.

Estimates Free!!

THE DISCOUNT HOUSE

211, HIGH STREET, SWANSEA

Where Family Shopping is at
Budget Prices

AT HOME OR AWAY, YOU ALWAYS WIN WITH THE ROYAL NAVY

THE ANSWER IS

TEAMWORK

Security

Friendship

Travel

Sport

Trade

Promotion

Apprenticeship Pay Career

Excitement

Action

It isn't difficult to join the above team and learn to play in all
positions at once.

For further information contact your local Naval Careers Office or
send away the coupon below.

The Careers Officer, Royal Navy and Royal Marines,
47 St. Helen's Road, Swansea.

Please send me further information on a career in the Royal Navy

Name Date of Birth.....

Address

The Gate Game

This weeks prize money is £7.

Check carefully the number printed below, if it coincides exactly with the official attendance as published in the Evening Post, use your skill and knowledge of Football, to answer the question below and return this programme to the "Secretary's Office" before 12.0 noon on Thursday next.

YOUR GATE NUMBER IS

Nº 7293

Today's question :-

Who were the First winners of the Football League Cup?

R. A. JOHNSON

**HILLFIELD
LLANSAMLET**

Tel. : 71051

**WE COLLECT AND CLEAR ANY SMALL COAL FROM YOUR
COALHOUSES AND OFFICE CELLARS
CASH ON COLLECTION**

When the game is over make your goal.

The Dragon Hotel

Kingsway Circle

Telephone 51074

The perfect place to meet your friends before and after the match. Here you can discuss the game in comfortable, pleasant surroundings and at the same time enjoy a quick meal and a refreshing drink. The first-floor Buttery opens from 12-3 pm and 6-11 pm on Saturday.



same good care-everywhere

*We offer our sincere wishes
for a successful season . . .*

■ **THYSSEN (GREAT BRITIAN) LTD.**
Mining, Civil Engineering, Tunnelling.

■ **THYSSEN ENGINEERING LTD.**
Structural Steelwork, Steel Fabrications
Electrical Installations, Joinery Manufacturers

■ **FLEXADUX PLASTICS LTD.**
Flexible Ducting and Tubing

■ **C.P.M.S. LTD.**
Komatsu Distributors. Gel Stemming Ampoules

■ **T. BRIDGES & CO. LTD.**
Mining Engineers

■ **THYSSEN DEVELOPMENTS LTD.**
Speculative Building



Head Office :
BYNEA - LLANELLI - CARMIS.

J. E. F. PHILLIPS

Plumbers,
Gas & Heating
Engineers

31 RAGLAN ROAD,
TYCOCH, SWANSEA
Tel.: Swansea 22529

Morgan & Williams

(Swansea) Ltd.

Decorative Flooring Contractors

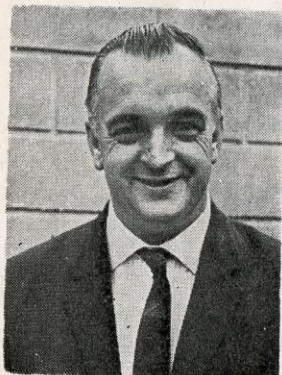
CWM RD., HAFOD

SWANSEA

Tel.: 54691



pools corner



TUDOR EVANS says...

Owing to the forthcoming re-organisation of the Pools, etc., the Vetch Field Pools Office will be open for business at the following times:-

Monday	9.30 a.m. - 12.30 p.m.	2 p.m. - 6 p.m.
Tuesday	9.30 a.m. - 12.30 p.m.	2 p.m. - 6 p.m.
Wednesday	9.30 a.m. - 12.30 p.m.	2 p.m. - 6 p.m.
Thursday	9.30 a.m. - 12.30 p.m.	2 p.m. - 6 p.m.
Friday	9.30 a.m. - 12.30 p.m.	2 p.m. - 6 p.m.
Saturday	9.30 a.m. - 12.30 p.m.	CLOSED.

I will be very pleased to meet any Agents and Supporters at the office during these hours to discuss the new fund-raising schemes, or I will gladly arrange a meeting by appointment at any other time.

WE HAVE THE TICKETS — WILL YOU SELL THEM?

Call or phone Vetch Field Pools Office - 53633

LET'S HAVE UNITED SUPPORT FROM SWANSEA SUPPORTERS

Name.....

Address

I wish to become an agent/member of your Bingo Ticket Scheme.

*Please call and see me at the above address. It will be convenient to do so on.....(date), at.....(time).

*I will call at your office during normal office hours.

*Delete as necessary.

Signed.....

SPOTLIGHT

TOP TWELVE IN THE FOOTBALL COMBINATION

Tables of Results to Tuesday, 26th August, 1969 (Not Inclusive)

Season 1969/70

	P	W	D	L	F	A	Pts
West Ham United	3	3	0	0	7	1	6
Swansea Town	3	2	1	0	2	0	5
Southampton	3	2	1	0	10	2	5
Ipswich Town	3	2	1	0	9	2	5
Queens Park Rangers	3	2	1	0	9	5	5
Tottenham Hotspur	2	2	0	0	3	0	4
Cardiff City	2	2	0	0	5	2	4
Oxford United	2	2	0	0	6	4	4
Chelsea	3	2	0	1	5	4	4
Arsenal	3	1	1	1	5	2	3
Luton Town	2	1	1	0	4	2	3
Bournemouth & Boscombe	3	0	3	0	4	4	3



- v. Aldershot—W. B. Penhale, St. Helen's Road.
- v. Swindon Town (League Cup)—Alf. Hoile, Peninsular Plant Ltd., Kingsway, S'sea.
- v. Southend United—J. W. Harries, Brynnyr Road, Swansea.
- v. Darlington—Brian Holder, Gower Garages.
- v. Northampton Town—Mr. A. Birt, Langland Court.
- v. Peterborough United—Mr. E. Carr, Roofing Contractor, Sketty.
- v. Chester—Mr. Harvey, Swansea Timber and Plywood Co. Ltd.
- v. Lincoln City—Mr. J. Prince, Morsmith Motors.
- v. Crewe Alexandra—Mr. J. T. Murphy, S.U.B. Contractors Ltd.
- v. Newport County—Llewellyn Potter and Williams, Stationers, Walter Road.
- v. Wrexham—Picon (South Wales), Mr. M. Sheppard, Old Prince of Wales Dock, S'sea
- v. Brentford—Mr. R. Jones, R. G. Jones (Bishopston) Builders.
- v. York City—Mr. W. Eynon, Eynons Ltd., Brynnyr Road.
- v. Exeter City—Mr. J. Prince, Morsmith Motors.
- v. Colchester United—Mr. A. Birt, Langland Court.
- v. Oldham Athletic—Mr. Emmanuel Struel, Malkam Properties Ltd.
- v. Port Vale—J. E. Cheetham, Roofing Specialist.
- v. Bradford (P.A.)—Davies & John, Heating Engineers, 10 Richard Street, Manselton
- v. Workington—Mr. D. Braidwood, Braidwood Glazing.
- v. Grimsby Town—Mr. N. Hinder, Hinder Bros. Builders.
- v. Scunthorpe United—Mr. I. Lloyd, Builders, Bishopston.
- v. Notts County—Jones & Freeman, Builders, Baglan.
- v. Hartlepool United—L. G. Murphy, Haulage Contractor, Landore.

GOALS?
SEE THE SWANS

COALS?
SEE MERRIMAN & STEPHENS Ltd.

Eastern Depot, East Side Approach Road,
Swansea Tel. 52305

Vice-Presidents Page

By Invitation of the Chairman to-day's Guests of the Board are Mr. and Mrs. Jack Beynon.



Mr. and Mrs. Jack Beynon

Mr. & Mrs. Beynon have both been supporters of Swansea Town A.F.C. for many years. Jack is a Vice-President of Swansea Y.M.C.A. and a member of the Swansea Rotary Club.

Mrs. Beynon is a member of the Inner Wheel.

Jack Beynon was for many years a household name in Welsh and Swansea Table Tennis circles. He has always been very interested in sport generally and Swansea Town in particular.

Next Weeks Guests of the Board are :

Mr. Charles Atkins and Mr. A. J. Bending.

DRINK

VALE OF NEATH ALES

BREWED & BOTTLED BY
EVAN EVANS BEVAN LTD.
VALE OF NEATH BREWERY
NEATH
Tel. Nos. 2341 (4 Lines)

John Ace (Garages) Ltd.

ALEXANDRA GARAGE
DE LA BECHE STREET
SWANSEA
Tel. : 54393/52701

SIMCA MAIN AGENTS.
OPEN FOR PETROL 8-10. 7 days/week
BODY & MECHANICAL REPAIRS.
PERSONAL ATTENTION

SAVE A LITTLE — SPEND A LITTLE

THE SOUTH WEST WALES SAVINGS BANK

Local Addresses :

33 GRADOCK STREET
SWANSEA

81 BRYNYMOR ROAD
SWANSEA

108 WOODFIELD STREET
MORRISTON

Will pay you good interest on what you can save today for the needs of tomorrow

Personality Spot



SUSAN COOMBES

This weeks Personality Spot is taken by Susan Coombes of Pennard, who is Private Secretary to Mr. Gordon Daniels. Susan is 18 years of age, and was educated at Gors-einon Technical College. Her hobbies include listening to Classical and Modern Music, Yachting and Netball. Susan is one of many, of the Staff behind the Vetch Field scenes.

COURTESY IS SAFETY



HELP
TO
KEEP
SWANSEA
TOP
OF
THE
ROAD
SAFETY
LEAGUE

ISSUED BY SWANSEA ROAD SAFETY ADVISORY SUB-COMMITTEE