

*Rolande*



**SWANSEA  
TOWN**  
FOOTBALL CLUB  
**HANDBOOK**



SEASON - 1926-27 :: Price 3d.

**BEN. EVANS & CO., LTD.**  
Sports Dept. :: Swansea

**Footballs, Jerseys, Boots, Nets,**  
AT LOWEST PRICES

**Boxing Gloves, Hockey Sticks,**  
- Golf Clubs, Bags and Balls -

**Guns, Rifles, Revolvers and**  
Ammunition of every description

**Indoor Games of all kinds**

*Special Terms to Clubs on Application*

H. E. SHELL, PRINTER, SWANSEA.

OPHTHALMIC  
OPTICIANS



**C. F. Walters**

F.S.M.C.

226, Oxford Street,  
**SWANSEA**

C. F. WALTERS  
F.S.M.C.

C. W. STROTHERS  
D.B.O.A.]

C. H. WALTERS  
F.B.O.A. (HONS.),  
F.S.M.C.

TELEPHONE-4516

Registered by the Joint Council  
of Qualified Opticians for Sight-  
Testing and Optical Treatment  
under the National Insurance Acts



A GOOD "DOUBLE"  
FOR ALL SPORTSMEN:

THE

"Sporting  
News"



AND

"Cambria  
Daily  
Leader"



BRIGHT FOOTBALL REPORTS  
Candid Criticism :: Topical Pictures  
— And UP-TO-DATE NEWS —

THE  
SWANSEA TOWN ASSOCIATION  
FOOTBALL CLUB, LTD.

SEASON . 1926-27.

OFFICERS

*President:*

SIR ALFRED MOND, BART., M.P., P.C.

*Directors:*

Mr. OWEN EVANS - *Chairman.*

Mr. B. WATTS JONES.

Mr. T. M. MARTIN.

„ J. B. OWEN.

„ T. M. WHITE.

„ TREVOR EVANS.

„ D. J. BASSETT.

*Manager:*

*Secretary:*

Mr. S. B. WILLIAMS.

*Registered Office:*

130, King Edward Road, Swansea.

*Auditors:*

Messrs. G. BRINLEY BOWEN & MILLS, Wind St., Swansea.

*Telegraphic Address:* "SOCCER, SWANSEA."

*Telephone No.:* 3633.



Telephone—4807.

Telegrams—"MONICO, Swansea."

AFTER THE MATCH  
don't forget to call at the

# Cafe Monico

HIGH STREET

The House of Quality

For FISH TEAS, etc.

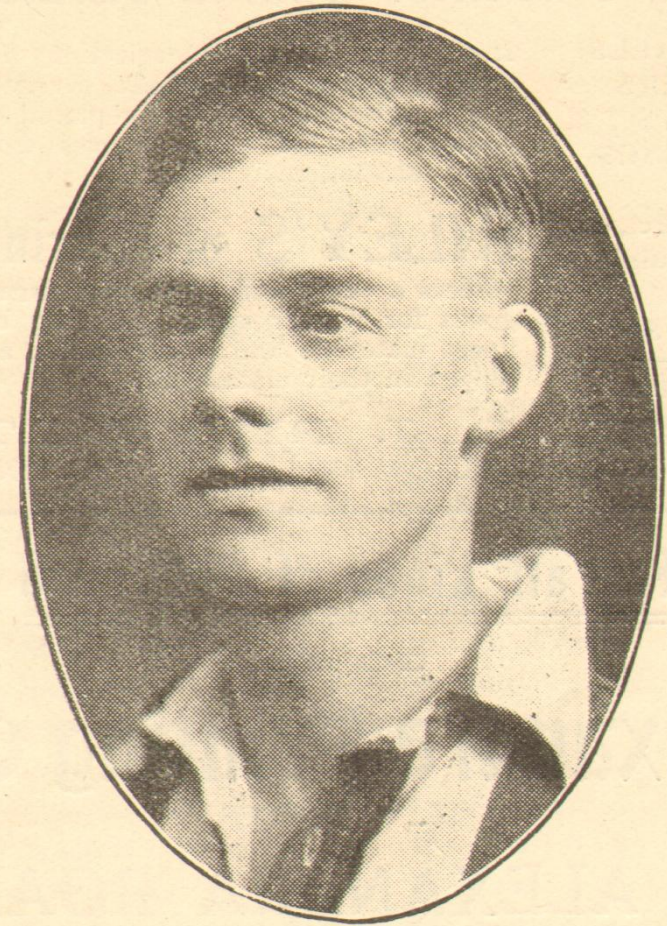


Charges Moderate

40 Bedrooms

F. E. HEAD, Manageress

2



J. CARR.

3



SEND TO-DAY FOR

# Riley's Winter Sports Catalogue

FOOTBALLS  
KNICKERS  
JERSEYS  
STOCKINGS  
POSTS  
NETS, &c., &c.  
and requisites  
for all  
Winter Sports

It contains a complete selection of everything required for football. Every article is guaranteed and will be replaced or your money refunded if it proves defective. Your satisfaction is assured.

## RILEY'S of Accrington

possess a world-wide reputation for reliable goods for Winter sport. Nothing but the finest materials and workmanship are employed in their manufacture.

**E. J. RILEY LTD.**  
WILLOW MILLS . . . ACCRINGTON

**FREE**  
Send a postcard  
now for Winter  
Sports Catalogue

### For all kinds of PRINTING

GO TO

## Alexandra Printing Co.

(E. R. SERLE)

19 ALEXANDRA ROAD,  
SWANSEA

Telephone—3596.

## SWANSEA TOWN FIXTURES, 1926-27.

### Football League—Division II.

1926	1927
Aug. 28—Reading .....H	Jan. 1—Blackpool .....A
30—Grimsby Town .....A	8—F.A. Cup .....
Sept. 4—Wolverhampton W. A	15—Reading .....A
11—Nottingham Forest...A	22—Wolverhampton W...H
13—Grimsby Town .....H	29—Nottingham Forest...H
18—Barnsley .....H	Feb. 5—Barnsley .....A
20—Blackpool .....H	12—Manchester City .....H
25—Manchester City .....A	19—Darlington.....A
Oct. 2—Darlington .....H	26—Portsmouth .....H
9—Portsmouth.....A	Mar. 5—Clapton Orient .....A
16—Clapton Orient .....H	12—Notts County .....H
23—Notts County .....A	19—Hull City .....A
30—Hull City.....H	26—South Shields .....H
Nov. 6—South Shields .....A	Apl. 2—Preston N.E.....A
13—Preston N.E. ....H	9—Chelsea .....H
20—Chelsea.....A	15—Fulham .....A
27—Bradford City.....H	16—Bradford City .....A
Dec. 4—Southampton .....A	18—Fulham .....H
11—Port Vale.....H	23—Southampton .....H
18—Middlesborough .....A	30—Port Vale .....A
25—Oldham Athletic.....A	May 7—Middlesborough .....H
27—Oldham Athletic.....H	



Ye Olde  
Gore House Hotel

GOAT STREET

SWANSEA



THE HOUSE WHERE  
SPORTSMEN  
GATHER



Proprietor - - D. C. REES

SWANSEA TOWN FIXTURES, 1926-27.

Welsh League—Division I.

1926	1927
Sept. 11—Cardiff Corinthians...H	Jan. 1—Pembroke Dock.....H
16—Lovell's Athletic.....H	10—Mid Rhondda .....A
Oct. 7—Newport County .. A	20—Newport County.....H
13—Barry Town.....A	27—Lovell's Athletic.....A
18—	Mar. 10—Penrhiwceiber.....H
27—Ebbw Vale ..... A	24—Cardiff City.....H
30—Cardiff Corinthians...A	Apr. 7—Ebbw Vale .....H
Nov. 4—Mid Rhondda .....H	15—Aberdare .....H
10—Cardiff City.....A	18—Penrhiwceiber.....A
20—Merthyr Town .....H	19—Aberdare .....A
25—Barry Town .....H	30—Bridgend .....A
27—Pembroke Dock .....A	May 7—Merthyr Town .....A
Dec. 11—Bridgend .....A	



Elastic Stockings, Knee Caps, Anklets, &c.

**HARRIES & MORRIS (Chemists) Ltd.**  
199 HIGH STREET, SWANSEA

**D. J. SNELL,**  
20/26 High Street Arcade,  
SWANSEA

THE MOST POPULAR ADDRESS IN WALES FOR

Pianos, Gramophones, Records, Music Copies  
Wireless Sets and Accessories

Tel. 3784

LISTS FREE

Telephone—2352.

Telegrams—"IVRO."

**IVOR L. ROBERTS,**

Best for BICYCLES, MOTOR CYCLES,  
MOTOR CARS and WIRELESS SETS.

EASY PAYMENTS ARRANGED.

223 OXFORD STREET, SWANSEA

SWANSEA TOWN FIXTURES, 1926-27.

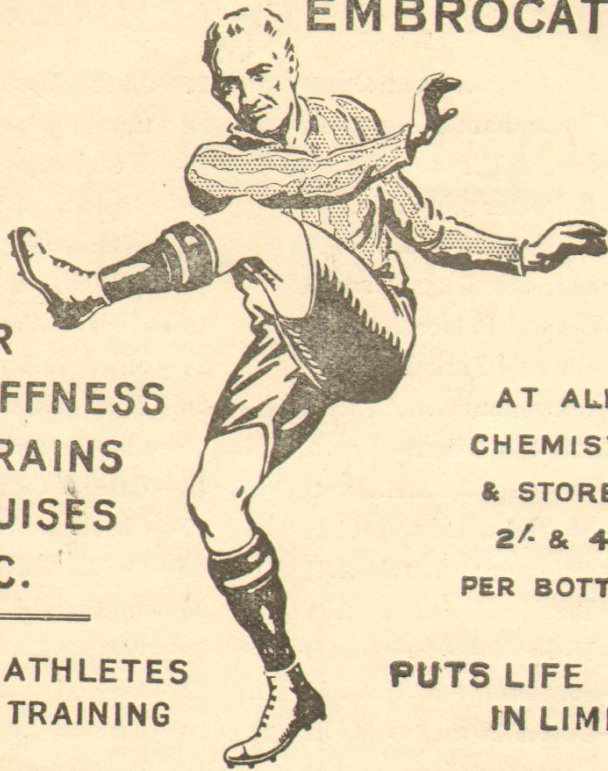
London Combination.

1926	1927
Aug. 28—Reading .....A	Jan. 22—Luton Town ... ..A
30—Tottenham Hotspur H	29—Crystal Palace .....A
Sept. 4—Cardiff City.....H	Feb. 5—West Ham.....H
6—Leicester City.....H	10—Chelsea .....A
18—West Ham .....A	12—Portsmouth .....A
20—Leicester City .....A	16—Brighton & Hove.....A
25—Crystal Palace.....H	19—Queen's Park R .....H
Oct. 2—Queen's Park R .....A	21—Millwall Athletic ... ..A
9—Portsmouth.....H	26—Tottenham Hotspur...A
16—Clapton Orient .....A	Mar. 5—Clapton Orient .....H
21—Watford .....H	12—Cardiff City .....A
23—Southend United ...H	17—Charlton Athletic.....H
Nov. 6—Brighton & Hove ...H	19—Chelsea .....H
13—Brentford.....A	26—Southend United .....A
18—Millwall Athletic ...H	30—Watford.....A
Dec. 4—Southampton .....H	Apl. 2—Arsenal .....H
18—Luton Town .....H	9—Arsenal .....A
25—Coventry City.....H	16—Brentford .....H
27—Coventry City.....A	23—Southampton.....A
1927	28—Fulham .....A
Jan. 8—Fulham .....H	May 5—Charlton Athletic.....A
15—Reading .....H	



# ELLIMAN'S

EMBROCATION



FOR  
STIFFNESS  
SPRAINS  
BRUISES  
ETC.

AT ALL  
CHEMISTS  
& STORES  
2/- & 4/-  
PER BOTTLE

FOR ATHLETES  
IN TRAINING

PUTS LIFE  
IN LIMBS!

ELLIMAN, SONS & CO. LTD.  
EMBROCATION MANUFACTURERS, SLOUGH



P. REID.



Telephone No. 3511.

SOUTH WALES AGENCY  
STORES: ORCHARD STREET,  
————— SWANSEA

# TRUMAN'S

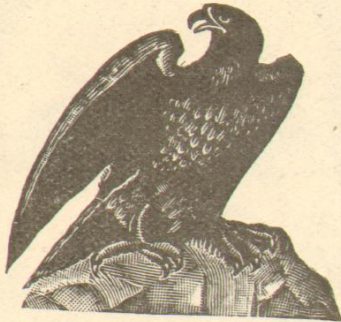
---

TRADE

MARK

ESTD.

1669



## CELEBRATED BURTON ALES

C 4 (Strong) A SPECIALITY

On Draught at all the Principal Hotels



**Truman, Hanbury, Buxton & Co., Ltd.**  
LONDON & BURTON

12



J. HILLS.

13



PLAYERS ENGAGED FOR SEASON 1926-27.

*Goalkeepers :*

J. Denoon            J. Hills            O. Marlow

*Backs :*

E. Morley            W. Milne            B. Williams  
A. E. Langford

*Halves :*

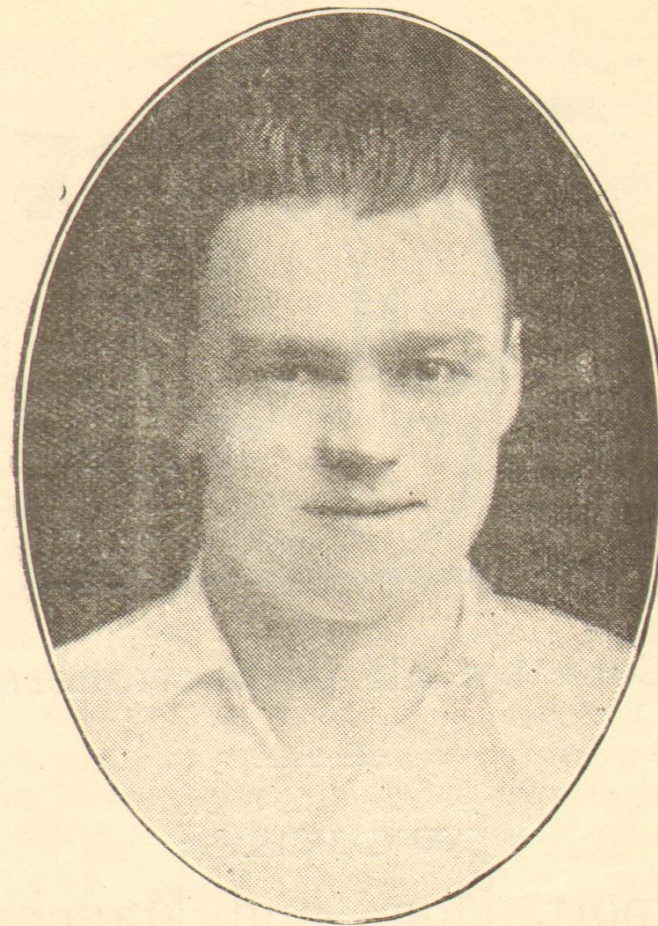
J. Collins            J. Sykes            T. Woodward  
W. J. Forbes        L. MacPherson     C. Lloyd  
H. Hanford           B. Humphries      A. Steele

*Forwards :*

W. Hole            H. Deacon           L. Thompson  
J. Fowler           G. Thomas           J. E. Carr  
W. Lewis           H. Pattemore        P. Reed  
D. S. Nicholas      J. McCarthy         B. Beynon

*Trainers :*

E. Edwards                    W. Wishart



T. WOODWARD.





Sold by all Confectioners.

WORKS:

Newport, Mon., and Manchester

## OUR NEW PLAYERS.

**J. HILLS**, Goal-keeper—Was born at Plumstead and played for his school team at centre-forward when nine years of age. His physique in junior football suggested more usefulness at full-back, and graduating into a goal-keeper, his first professional club was Northfleet United. After two seasons with that club his cricketing abilities attracted the attention of the Glamorgan Club, and 1925 saw him in the ranks of Cardiff City. Standing six feet high, and weighing twelve stones and a half, he has all the essentials of a first-class keeper. He played many fine games last season in the Cardiff City First League side, and, if he reproduces that form for the Swans, no anxiety need be felt for the last line of defence when in his charge.

**T. WOODWARD**—A native of Troedyrhiw, near Merthyr, where so many first class players have been discovered. After his school team, he next played for Troedyrhiw Stars and Barry as an amateur. Merthyr Town quickly spotted his possibilities, and he signed for them as a professional. His next clubs were Chesterfield and Llanelly, the latter of whom transferred him to Preston North End, with whom he spent a season and a half, and make 27 English League appearances. He is a versatile player, capable of taking any of the inside forward or half-back positions, and, seeing he is still a youngster, should prove a decided acquisition to the Swans ranks.



**J. E. C. CARR**—An outside-left of experience secured from the Southampton Club, for whom he has been a regular member of their League side for the past three seasons. His only previous club was Reading. With a useful turn of speed and very accurate in his centering Carr has given many fine displays against the Swans on the Vetch Field. A reproduction of this form should secure him a warm welcome from our supporters.

**P. REID**—Comes to the Swans from the Rhyl Club, for whom he scored 48 goals last season in the centre-forward berth. His previous club was Parkhead Juniors, a well-known Glasgow Club, by whom he was secured from his local team, New Stevenson United. He made a very favourable impression upon the Swans representatives at the Welsh Cup-Tie at Rhyl, and if the promise then shown is developed as anticipated, the Swans will have every reason to congratulate themselves upon an excellent stroke of business. Quite a youngster, he is fast, tricky and an excellent shot, being an adept at taking up position, reminiscent of our old centre Smith.

**D. A. STEELE** is an addition to the number of Internationals in the ranks of the Swans, having secured his Irish Cap last season, when with Charlton Athletic. Able to play at inside-left or left-half, Steele should prove a decided acquisition to the playing strength of the Swans during the season now opening.

**J. McCARTHY** is a local boy, hailing from the Cwmbwrla district, and a very promising inside forward. He represented his school, also the Abertawe Schools League in representative games, after which he joined the Swansea Amateurs, rapidly graduating from the 5th Division side to their first team. Last season he played for the Swans "A" team in all their matches, and at the close of the season was signed on as a professional. Although, at present, on the light side, he makes up for his lack of physique by cleverness in ball control.

**J. HANFORD**—Born at Blaengwynfi, Hanford is a product of the local School League for which he played and gained his Schoolboy International Cap for Wales. Last season he had a trial with the Swans "A" team and showed such promise that he was invited to join the professional ranks for the coming season. Only 18 years of age, his displays in the right-half position towards the close of the season suggest that he has the makings of a real good player.

**C. LLOYD**, a left half, is another addition to the list of local products in the ranks of the Swans, having graduated through the Abertawe Schools League, and the Swansea Amateurs. He showed an excellent conception of the game when appearing in the "A" team last season, both in attack and defence, and as he is still on the right side of twenty, great things are expected of him after a season or two in the Reserves.



# HANCOCK'S



# THE BEST

**H. PATTEMORE**—Although not a new player, was signed by the Swans towards the latter end of last season. A native of Ebbw Vale, he represented his local schools league, and gained his Schoolboy International Cap for Wales in 1922. He played against England in the match on the Vetch Field at full-back and scored the only goal for Wales: he also captained the team against Scotland in the same season. His first and only junior club was Blaenavon Corinthians for whom he played in the forward line, and after a trial with Huddersfield, came to the Swans and was signed on. Of excellent build, with good ball control and a fine shot. We shall be surprised if Pattemore does not develop into a first-class player with added experience.

**O. MARLOW** is another local player who has assisted the Skewen Club, N.O.R., Swansea Amateurs, and last season rendered excellent service to the Swans "A," after having played several games for our Reserves in the Southern League towards the end of the previous season. With more experience he should develop into an efficient understudy to our regular keepers.

**B. BEYNON** needs no introduction to footballers in Swansea and district: his career under the Rugby Union, Northern Union and Soccer codes being well-known. If he can reproduce some of the form he showed when last in the ranks of the Swans, Benny will be a very useful addition to the playing strength of the Club. He will probably be seen more often in the half-back line during this season.



# E.T. PICKLES

Piccalilli, Red Cabbage,  
Walnuts, Mixed Pickles,  
Prepared with *fresh* Vegetables.

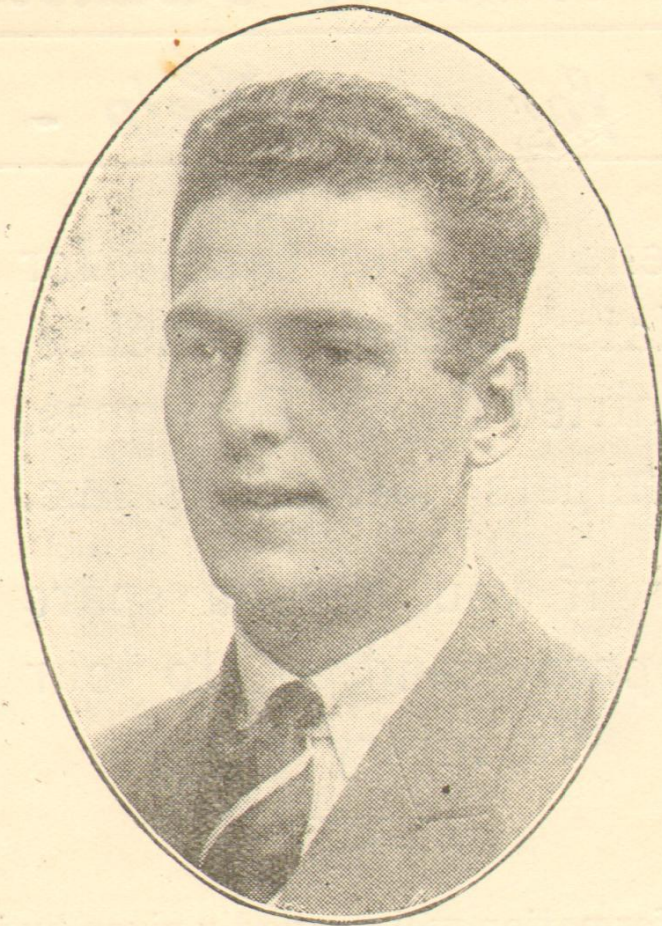
---

Sold by all GROCERS

---

WHOLESALE FROM

**Emanuel Thomas & Son**  
pickle Manufacturers  
SWANSEA



H. PATTEMORE.



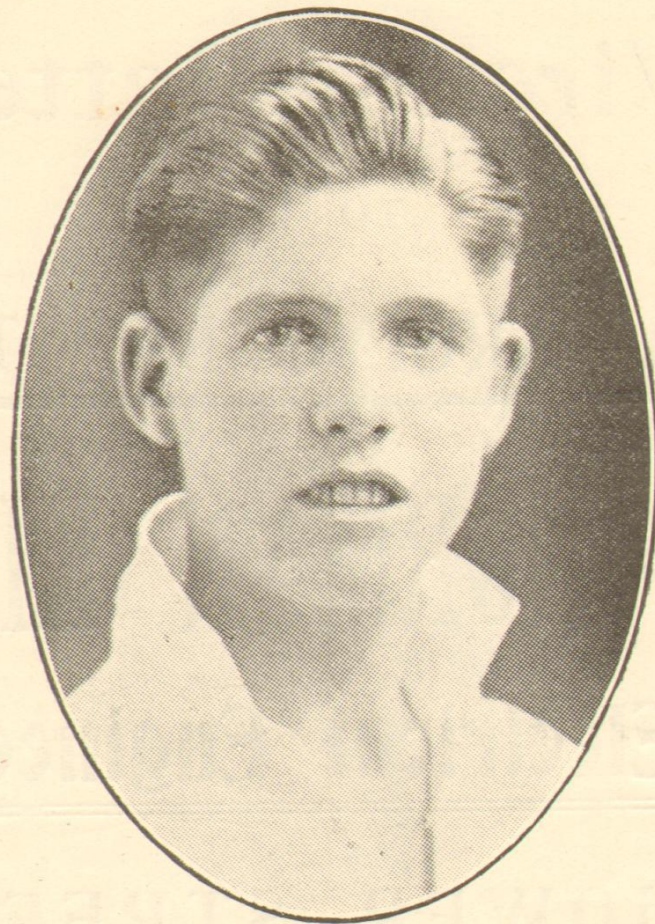
*The Blind of Swansea*  
*call for your Help - -*

Send us your Orders for  
Mats, Baskets, Brushes,  
Knitted Goods, Costumes,  
Jumpers, Stockings, &c.

Or if you have a spare  
copper send it to our  
Voluntary Fund



Any information will be gladly given by the  
Secretary, T. J. PARRY, Institution for  
the Blind, Northampton Place, Swansea



H. HANFORD.



TAKE YOUR  
**Wireless Battery**

TO THE  
**CHARGING DEPOT:**

**H. NORMAN KIRK**

**Electrical Engineer**

**GOWER STREET**

**SWANSEA**



C. LLOYD.



# *THE ELYSIUM* *CINEMA*

---

The Cinema with the  
- GRAND ORGAN -

---

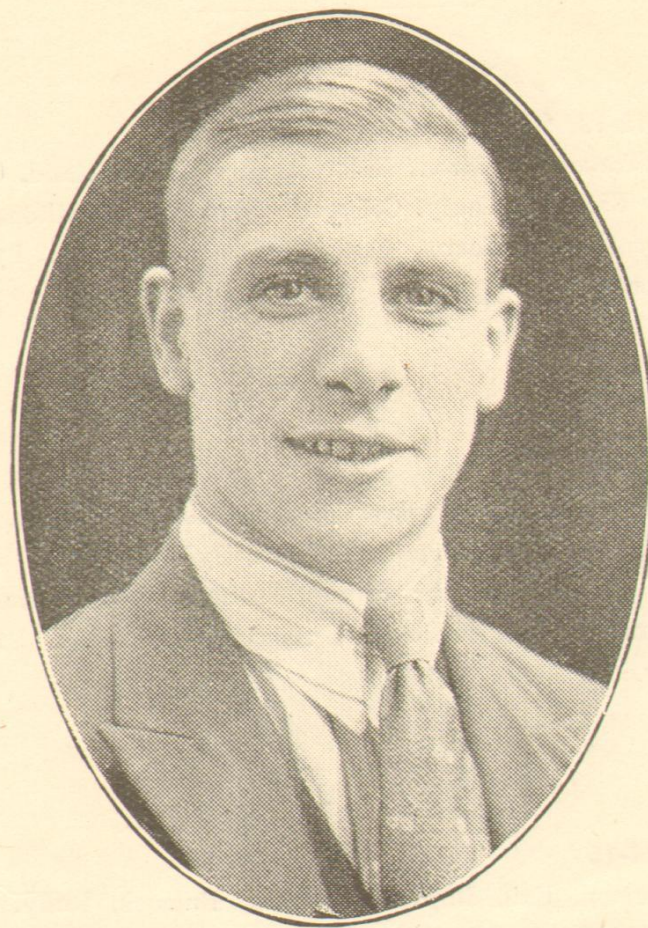
Continuous Performances Daily  
2-30 to 10-30

---

—THE LATEST AND BEST—  
PICTURES ONLY SCREENED

---

Special Orchestral Music Daily



G. THOMAS.



**LIST OF PROFESSIONAL PLAYERS FOR THE CLUB.**

---

**Season 1912-13**

Whittaker, Davidson, Ball, Swarbrick, Sutherland, Grierson, Jepp, Nicholas, Duffy, Coleman, Cleverley, Hamilton, Messer, Davies (S.), Prideaux, Soady, Fisher, Anthony, Fyfe (G.), Anderson, Weir.

---

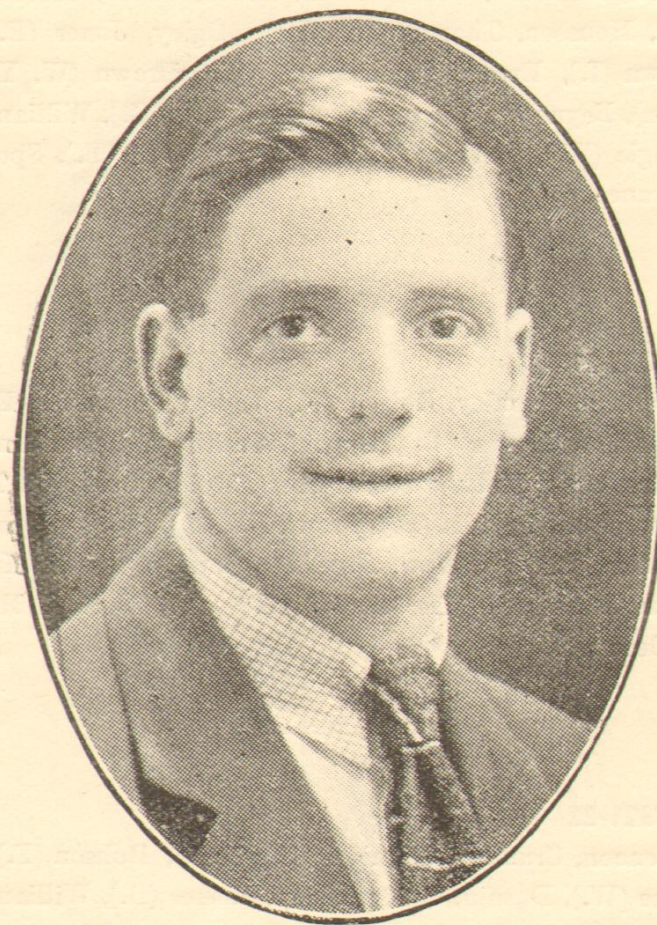
**Season 1913-14**

Anderson, Ball, Cleverley, Coleman, Cubberley, Duffy, Bassett, Fisher, Davies (S.), Hamilton, Grier, Fyfe (G.), Jepp, Mitchell, Mayo, Nicholas, Messer, Storey, Sutherland, Swarbrick, Weir, Williams (J. L.), Whittaker, Allman, Brown (I.), Bulcock, Gilboy.

---

**Season 1914-15**

Anderson, Ball, Brown (I.), Buck, Bulcock, Duffy, Gilboy, Hewitt, Lloyd, Mitchell, Mortimer, Read, Webber, Weir, Williams (J. L.), Gimblett (A. J.), Fisher, Heath, Booth (H.), Lock, Nicholas.



B. WILLIAMS.



**Season 1919-20**

Denoon, Collins, Nicholas, Hewitt, Robson (F.), Durnin, Harris, Johnston, Yule, Walton, Heath, Pinch, Sheldon, Lloyd, Ball, Houston, Thomas (H.), Hole, Ogley, Jones (E.), Burch, Brown (I.), Evans, Cartwright, Weir, Brown (W. Y.), Jones (Ivor), Beynon, Spencer, Crumley, Evans (G.), Williams (J. L.), Pringle (W.), Holder, Messer (W.), Messer (B.), Spottiswood, Torrance.

---

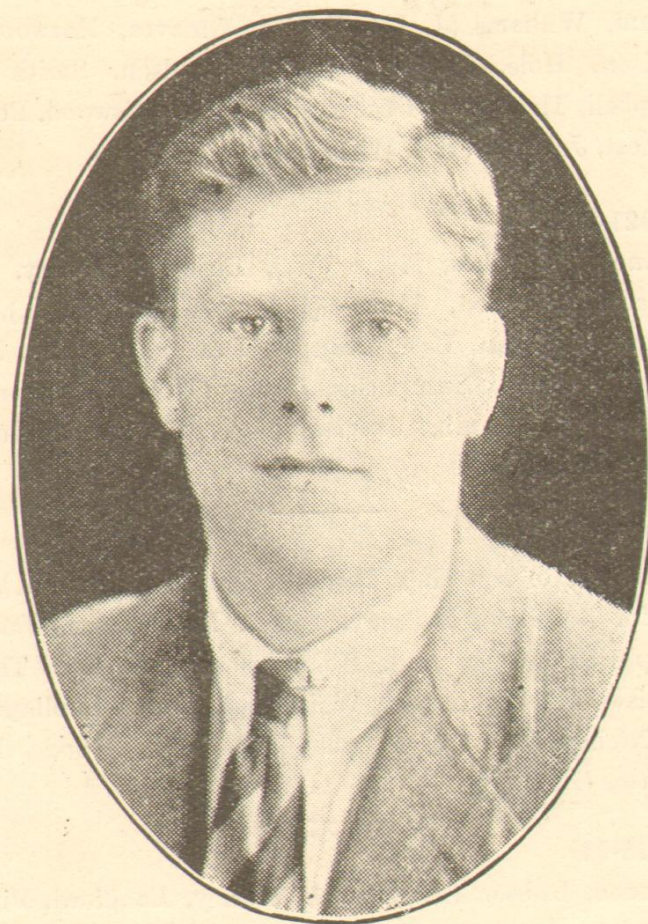
**Season 1920-21**

Denoon, Crumley, Robson (F.), Ogley, Stapleton, Evans (W. B.), Milne, Messer (B.), Durnin, Smith (F.), Williams (J. L.), Collins, Gray, Holdsworth, Herbert, Hole, Jones (I.), Thorburn, Edmondson, Beynon (B.), Brown (W. Y.), Rigsby, Spottiswood, Prentice, Riley, Catlow, Jennings, Morley, Slater, MacCallum, Duke, Herbert, Miller (J. B.), Hoyland, Burley, Milne (A.), McDevitt.

---

**Season 1921-22**

Denoon, Crumley, Jennings, Stapleton, Robson (F.), Morley, Milne (W.), Durnin, Collins, Gray, Messer (B.), Williams (J. L.), MacCallum, Hole, Jones (I.), Edmondson, Brown (W. Y.), Spottiswood, Hoyland, Milne (A.), Beynon, Riley, Slater, Jackson, McDevitt, Davies (W.).



W. LEWIS.



**Season 1922-23**

Crumley, Denoon, Cook, Milne (W.), Morley, Turner, Mac-  
Callum, Williams (J. L.), Collins, Greaves, Harwood, Ward,  
Roulson, Hole, Davies (W.), Edmondson, Smith (J. W.),  
Campbell, Thompson, Deacon, Gough, Spottiswood, Beer, Haug,  
Bennett, Johnson (H.), Whitehead.

---

**Season 1923-24**

Denoon, Brookes, Milne (W.), Bennett, Morley, Marriott,  
Roulson, Harwood, Booth (R.), Williams (J. L.), Collins,  
Bellamy, Sullivan, Hole, Crapper, Deacon, Holland, Smith (J.  
W.), Whitehead. Humphries, Davies (W.), Thompson, Gough,  
Spottiswood, Lamb, Davies (A.), Langford, Corkindale,  
Fowler, Lewis (W.).

---

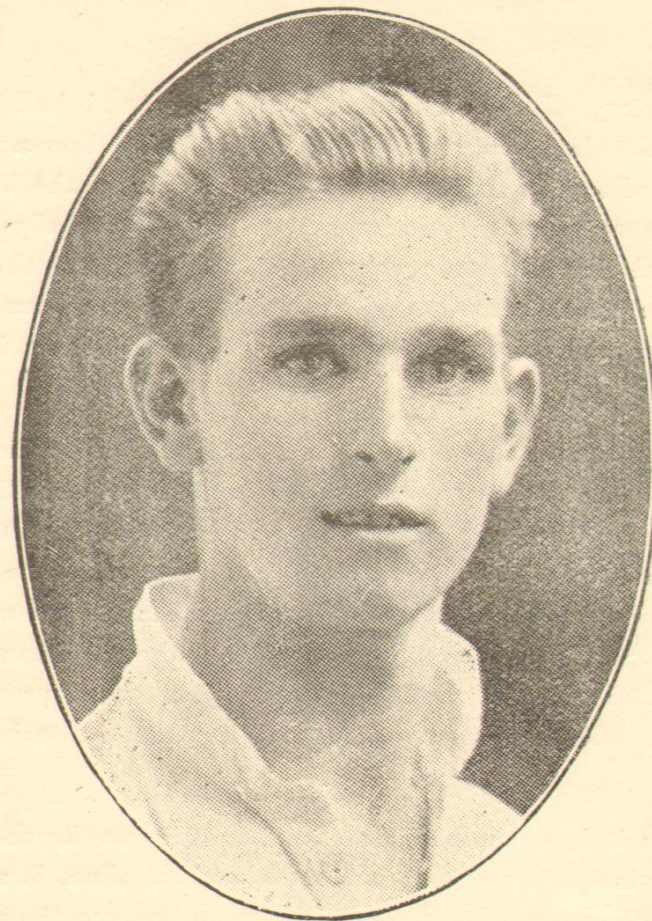
**Season 1924-25**

Denoon, Robson (E.), Bennett, Lamb, Milne (W.), Morley,  
Langford, Collins, Bellamy, Sykes, MacPherson, Booth (R.),  
Humphries, Davies (A.), Hole, Deacon, Fowler, Thompson,  
Spottiswood, Corkindale, Whitehead, Lewis, Holland, Miller  
(J.), Nicholas (D. S.), Thomas (G.), Logie, Woods, Handley,  
Williams (B.).

---

**Season 1925-26**

Denoon, Robson (E.), Trench, Morley, Langford, Milne (W.),  
Evans (J.), Williams (B.) Hutchinson, Collins, Sykes, Mac-  
Pherson, Bellamy, Handley, Rouse, Davies (A.), Forbes, Hole,  
Deacon, Fowler, Thompson, Corkindale, Whitehead, Lewis,  
Thomas (G.), Morris, Nicholas, Humphries, Pattemore.



**J. McCARTHY.**



## SOCCER IN THE SCHOOLS.

---

The story of the introduction of the round ball game among the elementary schools of the district has been a rather chequered one, in some respects very similar to the history of the game among the seniors. It owes practically all of its popularity and strength at the present time to the self-sacrificing endeavours and perseverance of the teachers in the various schools, both in the town itself, and later in the district also.

To run a school team in an elementary school, where the parents are not always in a position to afford even the limited equipment for participating in the game, are often indifferent, and in many cases even averse or unwilling to allow the boys to play, entails upon the teacher in charge a large expenditure of time and energy in providing funds for the provision of the outfit, the selection and coaching of the most promising players, and the organisation of the matches during the season.

When it is remembered that these duties are for the most part undertaken in the teachers own spare time, it will be seen that the services rendered by them, both to the school-boys themselves and to the welfare of the soccer code in the district, are of no mean order, and deserve the appreciation and support of all lovers of the round ball game.



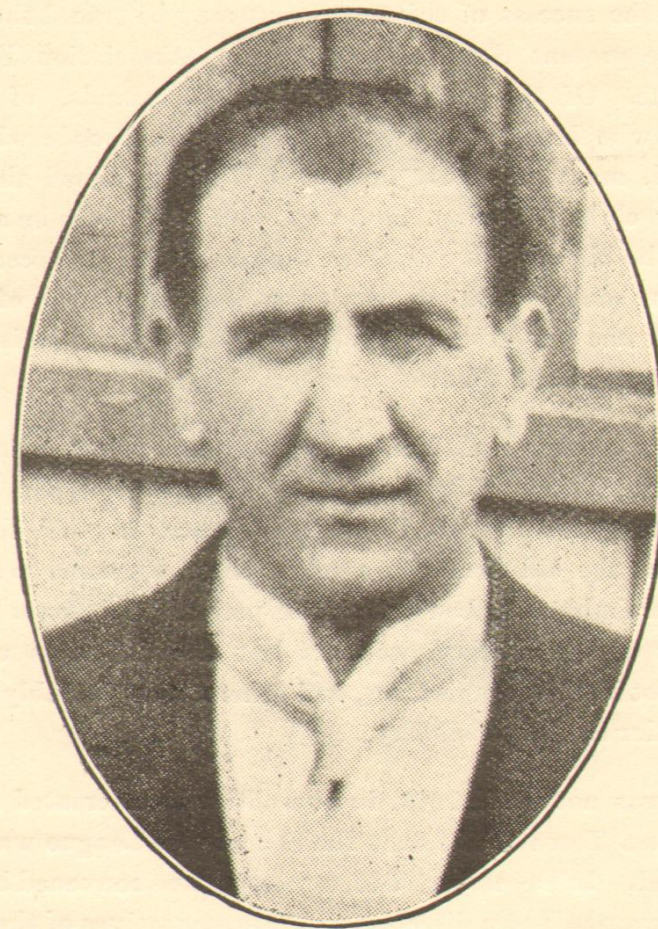
B. HUMPHRIES.



The elementary schools, as we know them to-day, were brought into existence by the formation of the School Boards in 1870, but it was not until the year 1897 that an attempt was made to introduce the soccer game in any organised way among the schoolboys. Soccer, however, had for a number of years been among the games played by the Swansea Grammar School.

As a result of several meetings of the teachers interested, who were all soccer players themselves through attendance at colleges where the code was in favour, a League was formed of teams from the following schools: Cwm, Dyfatty, Danygraig, Hafod, National, St. Helen's, Terrace Road, and Grammar School (or Intermediate). It is interesting to record that the Chairman of the League Committee was Mr. T. Harry, and the Secretary, Mr. J. B. Abraham, whilst among the earliest patrons of the movement were that grand old sportsman, Sir John T. D. Llewelyn, Bart., and Colonel W. Ll. Morgan. It may be noted, in passing, that at this period, the elementary school teachers had a football team of their own and played matches with the local senior clubs for a couple of seasons.

The Schools League was at once a great success, and the code became highly popular with the boys, so that in a very few years practically all the remaining elementary schools applied for membership, and ran their own teams. Interest grew apace, and although there was no Welsh Schools Competition, a few inter-town matches were arranged, with



J. DENOON.

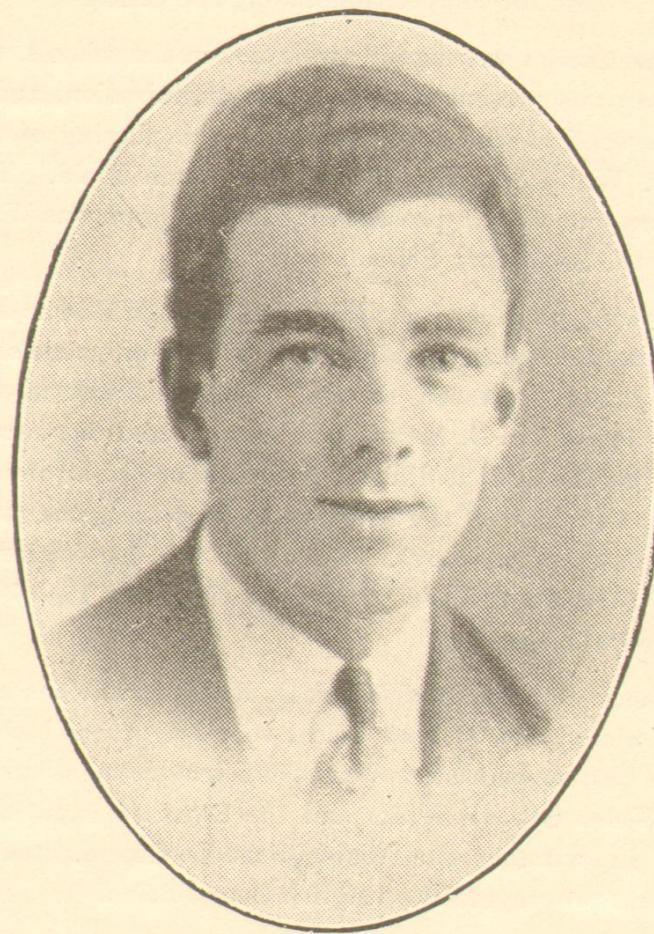


Cardiff among others, some of which were played on the Cricket Field.

To the success of this movement may be traced the origin of the present Swansea and District Association Football League. Of the hundreds, perhaps thousands, of young boys who became interested players of the code whilst at school, many no doubt in course of time joined the local rugby clubs. It may, however, with confidence be asserted that the big majority retained their affection for soccer after leaving school, with the result that a large number of junior clubs came into existence and were eventually organised into the Swansea and District League.

After a successful time for several years (it has been rather difficult to obtain definite dates in this connection) the Schools League gradually faded out of existence, in much the same way as the old Senior League in the town came to an end, and probably at about the same period. No doubt a good many of the original workers lost the freshness of their interest in the organisation, and others were probably loth to shoulder the responsibility.

It was not until 1913, in the enthusiasm created by the Swansea Town Club, that the Schoolboys League was again revived. In December, 1913, a meeting was convened between the Swansea Town directors and representatives of the School Teachers interested. The meeting decided to organise afresh the Schools League, and Mr. C. E. Poole consented to act as



L. McPHERSON.



Secretary, The Town Club voted a substantial grant to help the formation of the new organisation, and Mr. T. M. Martin presented a Shield for competition among the Clubs.

Much enthusiasm was again awakened in the schools, the Lennard Cup was presented to the new organisation, and a very successful first season culminated in the playing of the England v. Wales International on the Vetch Field. The sole Swansea schoolboy representative in this game was W. J. West from the Secondary School.

The following year, during which Mr. D. J. Williams had succeeded to the secretaryship, the number of schools in membership had increased to ten. The outbreak of the Great War found Mr. C. Meyrick in charge, and the record of the League during that difficult period, is one of strenuous endeavour on the part of the teachers, to keep the game going in the interests of the boys. They had the satisfaction of seeing the Swansea Schools progress to the Final Tie of the Welsh Shield Competition.

Under the secretaryship of Mr. J. O. Roberts, who has now completed nine years in that office, the League has become one of the best organised and most efficient in membership with the Welsh Schools F.A., and the Swansea boys have succeeded in winning the Welsh Schools Shield, besides making great progress in the English Competition.

In 1920, the schools in the outlying district decided to become a separate organisation and broke away from membership of the Swansea League to form the Abertawe Schools

League. This offshoot has also had a very successful career during its short life, and many Swansea and Abertawe schoolboys have gained their International Caps since the termination of the war.

The Swansea Town Club has always recognised the value of the Schools League in coaching young players, in maintaining interest in the game, and in providing future players and spectators. The Vetch Field has always been made available for the Inter-Town matches when possible, and on other occasions money grants have been made to the organisations in need.

At the present time the Swans have half-a-dozen players on their books who are products of Swansea Schools football, and there is no doubt that in course of time the proportion of Swansea born players will be very greatly increased.





## LAST SEASON'S RESULTS

### Welsh League—Division I

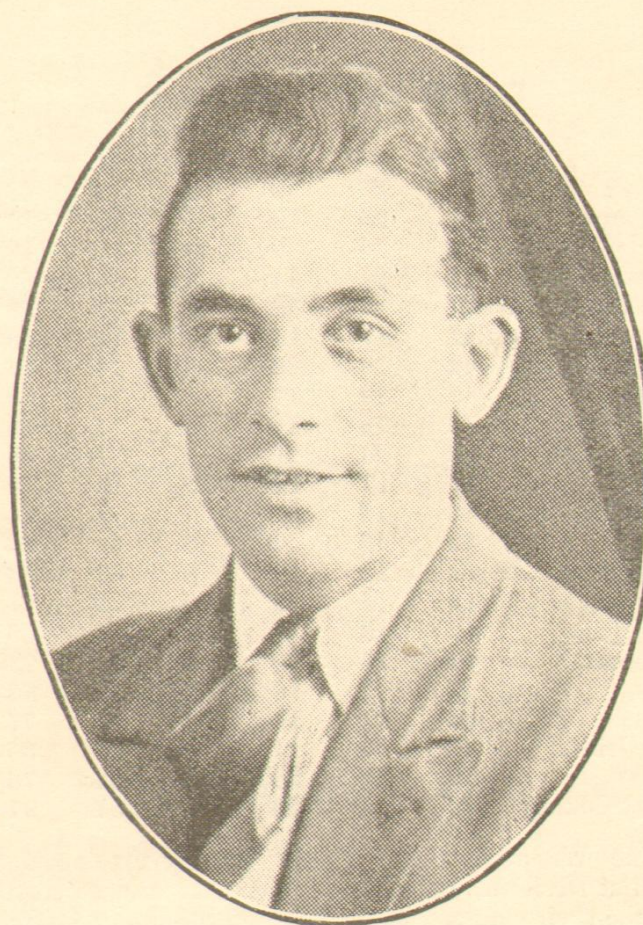
Aug. 29—Cardiff City ...	A 0—2	Nov. 28—Ebbw Vale ...	H 3—1
Sept. 3—Lovell's Athlet	A 3—2	Dec. 19—Aberdare ...	H 7—0
5—Cardiff City ...	H 3—0	25—Pembroke Dck	A 3—2
12—Barry ...	A 0—2	26—Pembroke Dck	H 3—1
16—Cardiff Corries	A 6—4	28—Ebbw Vale ...	A 1—1
19—Lovell's Athlet	H 6—0	Jan. 9—Mid Rhondda	H 2—0
21—Mid Rhondda	A 0—3	16—Aberdare ...	A 0—0
26—Bridgend ...	A 1—0	30—Pontypridd ...	A 3—2
28—Cardiff Corries	H 6—0	Feb. 18—Bridgend ...	H 8—2
Oct. 3—Aberaman ...	H 4—1	20—Newport Cty	A 1—0
10—Newport Cty	H 1—0	27—Penrhiwceiber	H 6—1
17—Penrhiwceiber	A 4—3	Mar. 27—Pontypridd ...	H 7—1
24—Barry ...	H 1—0	Apl. 2—Merthyr Town	H 4—1
Nov. 14—Aberaman ...	A 7—2	6—Merthyr Town	A 3—1

	<i>Played</i>	<i>Wcn</i>	<i>Lost</i>	<i>Drawn</i>	<i>For</i>	<i>Against</i>	<i>Pts</i>
Home Matches ...	14	14	0	0	61	8	28
Away Matches ...	14	9	3	2	32	24	20

### Welsh League Tournament

Aug. 31—Newport Cty	H 6—0	Jan. 23—Pembroke Dck	H 2—1
Sept. 10—Newport Cty	A 1—2	Feb. 10—Cardiff City ...	A 1—3
Oct. 29—Cardiff City ...	H 1—3	Mar. 11—Lovell's Athlet	A 3—0
31—Pembroke Dck	A 1—1	20—Bridgend ...	A 2—1
Nov. 12—Barry ...	H 3—2	Apl. 5—Cardiff Corries	A 3—0
19—Lovell's Athlet	H 6—3	10—Bridgend ...	H 4—0
21—Cardiff Corries	H 4—1	23—Barry ...	A 1—2

	<i>Played</i>	<i>Wcn</i>	<i>Lost</i>	<i>Drawn</i>	<i>For</i>	<i>Against</i>	<i>Pts</i>
Home Matches ...	7	6	1	0	26	10	12
Away Matches ...	7	3	3	1	12	9	7



W. MILNE.



**FINAL LEAGUE TABLE—Season 1925-26**

**Football League—Division II**

	Played	Won	Lost	Drawn	Goals		Points
					For	Against	
Wednesday ...	42	27	9	6	88	48	60
Derby County ...	42	25	10	7	77	42	57
Chelsea ...	42	19	9	14	76	49	52
Wolverhampton W.	42	21	14	7	84	60	49
<b>Swansea Town ...</b>	<b>42</b>	<b>19</b>	<b>12</b>	<b>11</b>	<b>77</b>	<b>58</b>	<b>49</b>
Blackpool ...	42	17	14	11	76	68	45
Oldham Athletic...	42	18	16	8	74	62	44
Port Vale ...	42	19	17	6	79	69	44
South Shields ...	42	18	16	8	74	65	44
Middlesborough	42	21	19	2	77	68	44
Portsmouth ...	42	17	15	10	79	74	44
Preston N. E. ...	42	18	17	7	71	84	43
Hull City ...	42	16	17	9	63	63	41
Southampton ...	42	15	19	8	63	63	38
Darlington ...	42	14	18	10	72	77	38
Bradford City ...	42	13	19	10	47	66	36
Notts Forest ...	42	14	20	8	51	73	36
Barnsley ...	42	12	18	12	58	84	36
Fulham ...	42	11	19	12	46	77	34
Clapton Orient ...	42	12	21	9	50	65	33
Stoke City ...	42	12	22	8	54	78	32
Stockport County	42	8	25	9	51	97	25

N.B.—The Wednesday and Derby County are promoted to First Division, while Manchester City and Notts County take their places. Stoke City and Stockport County have been relegated to Third Division (Northern Section), Reading from the Southern Section and Grimsby Town from the Northern Section being promoted to the Second Division.

**RESULTS OF THE CUP MATCHES, 1925-26.**

**F.A. CHALLENGE CUP,**

Nov. 29	—	Exeter City	...	...	A	3—1
Dec. 12	—	Watford	...	...	H	3—2
Jan. 9	—	Blackpool	...	...	A	2—0
„ 30	—	Stoke City	...	...	H	6—3
Feb. 20	—	Millwall	...	...	A	1—0
Mar. 6	—	Arsenal	...	...	H	2—1
„ 27	—	Bolton Wanderers	...	...	A	0—3

**WELSH SENIOR CUP.**

Feb. 24	—	Colwyn Bay	...	...	A	1—1
Mar. 4	—	Colwyn Bay	...	...	H	8—2
Apl. 8	—	Wrexham	...	...	A	1—0
„ 22	—	Rhyl	...	...	A	3—1
„ 29	—	Ebbw Vale	...	...	A	2—3

**SOUTH WALES SENIOR CUP.**

Jan. 11	—	Merthyr Town	...	...	A	3—4
---------	---	--------------	-----	-----	---	-----

**WEST WALES SENIOR CUP.**

Oct. 15	—	Aberdare Reserves	...	...	H	4—1
Apl. 29	—	Merthyr Town	...	...	H	2—1



## LAST SEASON'S RESULTS

### Southern League Championship Match

Sept. 7—Swansea Town R. v. Southampton R. at Swansea ... 1—2

### Friendly Matches

Sept. —New Tredegar ... .. A 1—0  
 Jan. 2—South Wales Amateur League ... .. H 4—1  
 Feb. 13—Llanidloes ... .. A 5—2  
 Apl. 24—Swansea and District League ... .. H 5—2

### SWANS "A" TEAM 1925-26

#### South Wales Junior Cup

Nov. 21—Caerau Rovers A 3—1 Feb. 11—Maesycloed C H 3—2  
 Jan. 14—Kenfig Hill ... H 5—1

#### West Wales Amateur Cup

Nov. 7—Swansea Albions H 2—1 Apl. 19—Cwm Athletic H 0—0  
 Dec. 5—Pembroke D. R. A 6—0 30—Cwm Athletic H 1—0  
 Feb. 6—Aberpergwm ... H 10—2

#### Other Matches

Oct. 3—Swansea A'teurs H 4—2 Mar. 13—Ferndale ... A 1—2  
 17—Mumbles ... A 1—6 Apl. 2—Wattstown ... A 1—0  
 31—Welsh Juniors A 1—4 5—Wattstown ... H 3—2  
 Nov. 14—Aberystwyth ... A 3—2 10—Pontardawe W A 6—2  
 28—Swansea Un'sity A 1—5 17—Baglan Church A 0—0  
 Dec. 19—Brecon Town ... A 7—0 17—Barry B'lands A 1—1  
 25—Fforestfach ... A 2—1 28—Gower XI. ... H 1—0  
 28—Cardiff Cy "A" H 1—5 30—Y.M.C.A. ... H 1—1  
 Jan. 9—Abercrave ... A 8—2 May 11—Barry B'lands H 0—0

## LOCAL JUNIOR FOOTBALL.

Below are set out some of the local competitions and the winning Clubs in season 1925-26.

### Challenge Cups.

West Wales Amateur Cup ... Swansea Town "A"  
 Swansea Senior Cup ... Cwm Athletic  
 Swansea Intermediate Cup ... Mond II  
 Swansea Junior Cup ... Swansea Amateurs  
 Joseph Janes (Sunday Sch'ls) Cup Hafod U.M.  
 David Thomas (Sunday Sch'ls) Cup Mount Zion  
 Swansea Thursday Challenge Cup Central United  
 Lennard (Schoolboys) Cup ... St. Helen's School  
 Trevor Evans (Schoolboys) Cup ... Dyfatty School  
 Hospital (Schoolboys) Cup ... Municipal Secondary Sch'ls  
 Co-Operative (Abertawe Sch'ls) Cup St. Joseph's School  
 Larcombe (Schoolboys) Cup ... Dyfatty School

### Leagues.

South Wales Amateur League ... Swansea Amateurs  
 Swansea & District League, Div. I. Cwm Athletic  
 " " III. Not decided  
 " " IV. Cwm Albions  
 " " V. Hafod Villa  
 Swansea Sunday Sch'ls L. (Senior) Hafod U.M.  
 " " (Junior) Mount Zion  
 " " " Argyle  
 " " " Forward Movement  
 Swansea Schools League ... Dyfatty Schools  
 Abertawe Schools League ... St. Joseph's School  
 Swansea Thursday League ... East Side



## SEASON 1925-26 IN RETROSPECT.

---

Whether we consider the record of the Swans in the Leagues, Cup Competitions, or financially, it cannot be gainsaid that last season was one of the very best from every standpoint. The final results of the season's work of both teams are set out in another part of the Handbook, and there is no need to recapitulate them here. Our record run in the English Cup (to give it the popular title) served to kindle immense enthusiasm all over South Wales, and to bring the Swans well to the fore in the football world. Both at Blackpool and against Millwall the play of the team was excellent, and the victory in each instance well deserved, although in the latter case it was delayed almost to the final whistle. The movement from which the goal accrued was a fine instance of the craft and excellent combination of the team, every player taking the ball at top speed, and when it was finally centred by Nicholas and crashed into goal by Fowler, the Millwall defence was fairly and squarely out-played. Of the Home games, the Arsenal match was the outstanding feature of the season, and the Swans confounded almost all the critics by fairly out-playing the team running for the championship of the First Division. Although the Swans had a gruelling time for the last fifteen minutes of the match, it can be said quite fairly, that it was nothing to what the Arsenal had to withstand in the previous sixty minutes of the game. A delightful game to watch, with football the foremost concern of both teams, albeit as keen

as mustard, was the general verdict of spectators at the match. The financial result was a record for the Vetch Field. For the first time in their history the Swans figured in a Semi-Final tie, and the game with Bolton Wanderers at Tottenham represents, perhaps, the only sad episode in last season's record. There is no doubt that the players were overstrung before the match commenced, and dogged by ill luck in the first fifteen minutes, Bolton seized the opportunity to settle the issue in that period. Although their exit was rather inglorious, last season's F.A. Cup competition undoubtedly enhanced the reputation of the Swans throughout the country, and the experience gained should be a valuable asset to the players in the near future. In the Welsh Cup competition it was again a case of the old proverb "There's many a slip twixt cup and lip," for after beating Colwyn Bay, Wrexham and Rhyl on the road to the Final, and leading Ebbw Vale by two goals, the Swans allowed themselves to be beaten by the odd goal, Ebbw Vale winning the Cup for the first time in their history.

In the Second League, the Swans eventually finished in the fifth position, which was a distinctly creditable performance for their first essay in that competition. At the start of the season, the team was composed of the players who had so worthily upheld our promotion hopes at the end of 1924-5; and a great game was seen when South Shields opened the program at the Vetch Field: the Swans should have won easily on the play, but both points went to South Shields. As a memento of this game, the South Shields Club were presented with a handsome framed photograph of both teams and officials, suitably inscribed in



illuminated letters, and a copy is hung in the Board Room at the Vetch Field. The match with Fulham on the Monday saw the Swans gain their first brace of points, and after a set back at Preston, Middlesboro', the ex-First Division side were handsomely beaten.

However, three successive defeats by top of the table clubs, Wolverhampton, Derby County and The Wednesday, caused a mild panic in the local press, but after remedying a couple of weaknesses, the team from that time forward steadily improved in confidence, and the result was a rise in the League Table. At the half-way mark, it was beginning to be recognised that the Swans were possible challengers to the promotion candidates, especially after the Swans had surprised the hitherto unbeaten Chelsea team at Stamford Bridge. The run of success in the Cup, however, induced the club to concentrate on that competition, with the result that something had to be sacrificed in the League tourney, notably against The Wednesday and Port Vale. The finish of the season was rather a drab one, the only League match won in April being that against Barnsley, no less than six games being drawn. The outstanding game in this period was the match with Chelsea on the Vetch Field. The Pensioners were third on the table, exceedingly anxious for every possible point, in case of a slip by the two leaders, and the game was a rare duel between two fine teams. Unfortunately, Fowler strained a muscle so badly in the first twenty minutes that he had to leave the field for the rest of the game, with the result that the match resolved itself into an unequal combat between the ten Swans and the Chelsea eleven. So well did the gallant

ten perform, that Chelsea were unable to score, and in fact had all their work cut out to keep their own goal intact. Nothing but hard luck prevented the Swans obtaining both points on that day. On the last day of the season the other promoted club visited us for the return game, but the result was a drawn game, and so honours remained even between Darlington and the Swans.

To sum up, it can be said without fear of contradiction, that the football served up on the Vetch Field last season was of the highest class, and no more skilful and exciting games could be desired than those witnessed during the past season.

The new offside rule has now had a full season's trial, and the legislators have seen no reason to make any alteration for the coming season, so that it must be presumed that they are satisfied with its working up to the present. In the case of the Swans it cannot be said that it has altered the style of play or the team's tactics in any very pronounced direction. In the early part of the season there was much discussion between certain clubs' players and management as to correct formation to combat the extra licence given to the forwards, and as a result many teams adopted what was called the W formation. The Swans, however, have, to all intents, remained satisfied with the old orthodox formation, and results have shown its virtues. The Swans are recognised as a very speedy team, and whether the same tactics would be as successful with a team of less speedy players is a matter for argument. As far as the spectators are concerned, the new rule has justified the expectations of its promoters. It has speeded up the game materially



by reducing the number of stoppages very considerably, and has certainly made the game more open. Goal scoring has not become the very simple matter that was expected, and the glut of goals has not materialised as yet.

In the Welsh League Competition the Reserves again distinguished themselves by retaining the Championship, while they also finished at the head of their section of the Subsidiary Tournament. Merthyr Town Reserves won the other section of this Competition, and the deciding match will be played off on the Vetch Field on Sept. 27th. It cannot, however, be said that the majority of the Welsh League games produced a high standard of football, and this may be accounted for by the reduced resources of many of the clubs last season owing to the wide-spread depression in trade. The Reserves also retained possession of the West Wales Senior Cup, beating the full Third League side of Merthyr Town in the final. This produced the best Reserve game of the season, and made amends for their defeat at Merthyr by the odd goal in the South Wales Cup. In the deciding match for the Southern League Championship of 1924-5, which was played off in September; the Reserves lost to Southampton Reserves by 1—2.

The Club last season decided to make a start in the process of training up local district players to the standard required for the Reserves, and the "A" team was inaugurated. As a result, several players of promise were unearthed during the season, and four of them have been engaged as professionals for this season, namely, Hanford, Marlow, McCarthy and Lloyd. The

"A" team succeeded in winning the West Wales Amateur Cup at the end of the season, but as the personnel of the team is being constantly changed, results of games are not of great importance.

Just as the present Handbook was going to Press, news came to hand of the resignation of the Club's Manager, Mr. J. Bradshaw, to take over a similar position with the Fulham Club. He joined the Swans in June 1919, shortly after the Club had been elected to the First Division of the old Southern League, and at once started to build up a side worthy of the town. It was several seasons, with very varying fortunes, before the team was moulded to a homogeneous style, and many changes in the personnel were necessary, but eventually the style of the side was shaped to its present model, and players secured to fit into the scheme. The result has been a successful side that has brought honours to the Club, but it cannot be too often repeated, that the building up process needs care, long views, patience, and time. The mere spending of large sums of money in the pursuit of "stars" is emphatically not one of the methods to adopt. Regret is general at his departure after seven seasons with the Swans, but he has everybody's best wishes for an equal measure of success at Fulham as at Swansea.





## LAST SEASON'S RESULTS

### Football League—Division II.

Aug. 29—South Shields H 1—2	Jan 16—Preston N. E. H 4—1
31—Fulham ... A 1—0	20—Bradford City A 1—3
Sept. 5—Preston N. E. A 2—4	23—Middlesboro... A 3—0
12—Middlesboro... H 4—0	Feb. 6—Wolves ... A 3—2
14—Stockport C... H 4—0	13—Derby County H 2—0
19—Portsmouth... A 0—0	25—Blackpool ... H 6—1
21—Fulham ... H 6—0	27—Notts Forest... H 2—0
26—Wolves H 2—4	Mar. 11—Sheffield W... H 2—2
Oct. 3—Derby County A 0—5	13—Port Vale ... A 0—3
10—Sheffield W... A 1—3	18—Portsmouth ... H 1—0
17—Notts Forest... H 3—0	20—Bradford City H 1—0
24—Southampton A 1—4	29—Southampton H 3—1
31—Port Vale ... H 1—0	April 2—Oldham Athl A 0—0
Nov. 14—Hull City ... H 2—0	3—Chelsea ... H 0—0
21—Chelsea ... A 3—1	5—Oldham Athl H 3—3
Dec. 5—Barnsley ... A 0—2	10—Clapton Orient A 0—2
19—Darlington ... A 3—3	12—Clapton Orient H 0—0
25—Stoke City ... H 1—1	17—Barnsley ... H 2—0
26—Stoke City ... A 1—1	24—Blackpool ... A 0—0
Jan. 1—Stockport C... A 3—1	26—Hull City ... A 2—4
2—South Shields A 1—3	May 1—Darlington ... H 1—1

	<i>Played</i>	<i>Won</i>	<i>Lost</i>	<i>Drawn</i>	<i>For</i>	<i>Against</i>	<i>Pts.</i>
Home Matches ...	21	13	2	6	50	17	32
Away Matches ...	21	6	10	5	27	41	17

## Final League Tables—continued

### THE WELSH FOOTBALL LEAGUE TABLE—Season 1925-26.

#### Division I,

	<i>Played</i>	<i>Won</i>	<i>Lost</i>	<i>Drawn</i>	<i>Goals</i>		<i>Points</i>
					<i>For</i>	<i>Against</i>	
Swansea Town R.	28	23	3	2	93	32	48
Cardiff City Res...	28	16	8	4	60	36	36
Mid Rhondda ...	28	17	9	2	65	41	36
Pembroke Dock ...	28	15	8	5	69	37	35
Barry Town ...	28	15	8	5	48	32	35
Newport County R.	28	13	11	4	55	37	30
Lovells Athletic ...	28	9	8	11	47	55	29
Ebbw Vale ...	28	12	11	5	53	63	29
Merthyr Town Res	28	8	12	8	65	70	24
Penrhiwceiber ...	28	7	13	8	55	65	22
Cardiff Corinthians	28	6	12	10	51	70	22
Aberdare Res. ...	28	7	13	8	44	71	22
Bridgend Town ...	28	6	15	7	46	78	19
Pontypridd ...	28	5	15	8	30	66	18
Aberaman ...	28	4	16	8	45	76	16



**Final League Tables—continued**

**WELSH LEAGUE—Season 1825-26**

**Subsidiary Tournament**

	Played	Won	Lost	Drawn	Goals		Points
					For	Against	
Swansea Town R.	14	9	4	1	38	19	19
Cardiff City Res....	14	8	3	3	35	19	19
Barry Town ...	14	5	4	5	32	23	15
Newport County R.	14	6	5	3	24	23	15
Pembroke Dock ...	14	4	4	6	22	17	14
Bridgend Town ...	14	4	7	3	19	27	11
Cardiff Corinthians	14	4	7	3	19	38	11
Lovell's Athletic...	14	2	8	4	15	40	8

**PLAYERS APPEARANCES.**

**Football League (Division II.) Matches, 1925-26.**

Deacon ... 38	Nicholas ... 28	Lewis ... 8
Thompson ... 38	Milne ... 27	Corkindale ... 8
Collins ... 38	Denoon ... 27	Evans ... 7
Sykes ... 35	Robson ... 15	Humphries ... 7
Hole ... 35	Bellamy ... 12	Thomas ... 7
Langford ... 34	Morley ... 11	Williams ... 5
Fowler ... 32	Edwards ... 10	Rouse ... 4
Macpherson ... 31	Morris ... 9	

**SWANS LEAGUE RECORDS.**

**Southern League—Division II.**

	Played	Won	Lost	Drawn	For	Against	Points	Posit'n
1912-13 ...	24	12	7	5	29	23	31	3rd
1913-14 ...	39	20	6	4	66	25	44	4th
1914-15 ...	24	16	7	1	48	21	33	4th

**Southern League—Division 1.**

1919-20 ...	42	16	15	11	53	45	43	9th
-------------	----	----	----	----	----	----	----	-----

**Football League—Division III (Southern).**

1920-21 ...	42	18	9	15	56	45	51	5th
1921-22 ...	42	13	14	15	50	47	41	10th
1922-23 ...	42	22	11	9	78	45	53	3rd
1923-24 ...	42	22	12	8	60	48	52	4th
1924-25 ...	42	28	8	11	68	35	57	1st

**Football League—Division II.**

1925-26 ...	42	19	12	11	77	58	49	5th
-------------	----	----	----	----	----	----	----	-----

**Welsh League—Division I.**

1912-13 ...	22	14	6	2	45	24	39	1st
1913-14 ...	18	11	3	4	49	20	26	2nd
1914-15 ...	16	8	6	2	20	22	18	3rd
1919-20 ...	30	15	7	8	53	35	38	4th
1920-21 ...	42	25	7	10	86	35	60	2nd
1921-22 ...	40	16	12	12	65	48	44	10th
1922-23 ...	40	28	6	6	120	41	62	2nd
1923-24 ...	30	23	5	2	86	18	48	2nd
1924-25 ...	32	24	4	4	75	18	52	1st
1925-26 ...	28	23	3	2	93	32	48	1st



**Swans League Records—continued**

**Welsh League—Subsidiary Tournament.**

	Played	Won	Lost	Drawn	For	Against	Points	Position
1925-26 ...	14	9	4	1	38	19	19	1st

**Southern League (Western Section).**

1921-22 ...	16	7	5	4	24	17	18	6th
1922-23 ...	12	6	4	2	25	14	14	3rd
1923-24 ...	34	19	10	5	62	38	43	5th
1924-25 ...	38	25	9	4	73	26	54	1st

**Swansea and District League—Division I.**

1912-13 ...	11	4	5	2	23	23	10	4th
1913-14 ...	12	11	1	0	58	11	23	1st

**Western League.**

1919-20 ...	18	13	3	2	39	15	28	2nd
1920-21 ...	30	15	7	8	60	29	38	4th



**SOME CLUB STATISTICS.**

**Record Gate Receipts and Attendances each Season.**

**League Matches.**

		Season 1912-13			
Date	Opponents	No.	£	s	d
Mar. 21, 1913 ...	Croydon Common ...	7,634 ...	194	16	10
		Season 1913-14			
Nov. 8, 1913 ...	Stoke ...	10,536 ...	273	3	0
		Season 1914-15			
Dec. 25, 1914 ...	Merthyr Town ...	7,510 ...	187	8	6
		Season 1919-20			
Feb. 14, 1920 ...	Queen's Park ...	18,706 ...	996	12	6
		Season 1920-21			
Feb. 19, 1921 ...	Merthyr Town ...	19,785 ...	1,137	7	6
		Season 1921-22			
Dec. 26, 1921 ...	Merthyr Town ...	17,374 ...	947	2	0
		Season 1922-23			
Aug. 26, 1922 ...	Merthyr Town ...	21,415 ...	1,112	0	3
		Season 1923-24			
Aug. 25, 1923 ...	Luton ...	18,844 ...	1,002	14	3
		Season 1924-25			
May 2, 1925 ...	Exeter City ...	24,404 ...	1,299	18	9
		Season 1925-26			
Sept. 26, 1925 ...	Wolverhampton W... ..	22,798 ...	1,195	17	3



**SOME CLUB STATISTICS.**

**Record Gate Receipts and Attendances each Season.**

**Cup Ties.**

		Season 1912-13			
Date	Opponents	No.	£	s	d
Oct. 20, 1912 ...	Newport County ...	3,124 ...	81	1	9
		Season 1913-14			
Jan. 10, 1914 ...	Merthyr Town ...	14,211 ...	422	18	9
Jan. 21, 1914 ...	Queen's Park ...	14,067 ...	775	19	3
		Season 1914-15			
Feb. 6, 1915 ...	Newcastle ...	14,359 ...	775	6	6
		Season 1919-20			
Mar. 11, 1920 ...	Cardiff City ...	12,663 ...	704	5	0
		Season 1920-21			
Jan. 28, 1921 ...	Plymouth ...	23,808 ...	1,752	13	0
		Season 1921-22			
Jan. 7, 1922 ...	West Ham ...	21,719 ...	1,428	17	0
		Season 1922-23			
Dec. 7, 1922 ...	Merthyr Town ...	12,291 ...	731	0	6
		Season 1923-24			
Feb. 2, 1924 ...	Aston Villa ...	20,035 ...	2,809	10	0
		Season 1924-25			
Jan. 31, 1925 ...	Aston Villa ...	20,111 ...	2,810	9	0
		Season 1925-26			
Mar. 6, 1926 ...	Arsenal ...	25,118 ...	3,429	8	6

**WELSH SENIOR CUP COMPETITION.**

**Dates—1926-27.**

Dec. 11	...	...	...	...	1st Round
Jan. 1	...	...	...	...	2nd Round
15	...	...	...	...	3rd Round
Feb. 12	...	...	...	...	4th Round
26	...	...	...	...	5th Round
Mar. 12	...	...	...	...	6th Round
26	...	...	...	...	Semi Final
Apr. 16	...	...	...	...	Final

Swansea Town enter the Competition at the 4th Round.

**Note**—Swansea Town and certain other Clubs receive special permission of the Association to play their Ties on other more convenient dates than those fixed above.



**F.A. CHALLENGE CUP.**

**Dates—1926-27.**

Nov. 27	...	...	1st Round	Competition Proper		
Dec. 11	...	...	2nd Round	„	„	
Jan. 8	...	...	3rd Round	„	„	
29	...	...	4th Round	„	„	
Feb. 19	...	...	5th Round	„	„	
Mar. 5	...	...	6th Round	„	„	
26	...	...	Semi Final	„	„	
Apr. 23	...	...	Final	„	„	

Swansea Town enter the Competition in the 3rd Round.

**CARS FOR HIRE**

Ring up after the Match:  
Telephone No. 3867

**D. G. Phillips & Sons**

**EMPIRE GARAGE**

**Singleton Street, Swansea**



**WEDDINGS A SPECIALITY**



**Distance No Object :: Terms Moderate**